

E-Designs Plans Inc.

A western Canadian company from Alberta that designs and ships home plans all across Canada, the US, and Overseas.

For more information about this plan contact the designer at: info@edesignsplans.ca.

Plan #: 2011543 Front Elevation

www.edesignsplans.ca

Call Us 1-855-675-1800



Left Elevation

Rear Elevation

Modified Bi-Level with 3-Car Garage

2130 Sq. Ft. Main & Second Floor

1280 Sq. Ft. Walkout Basement

3410 Sq. Ft. Total Living Area

Width: 38'-0" (plus posts)
 Depth: 68'-0" (plus deck)
 Bedrooms: 4
 Bathrooms: 3
 Main Floor Laundry: Yes
 Walk-in Pantry: Yes
 Office/Flex Room: Yes

Plan #: 2011543

Exterior Walls:

Foundation:

Special Ceilings:

Fireplace:

Deck(s):

Veranda:

Attached Garage:

Finished Basement Plan:

2x6 x 9 Ft. (Main Floor)

2x6 x 8 Ft. (Second Floor)

5' 2x6 Pony Wall on 4' ICF
 (Other Foundations Available)

Vaulted Kitchen & Great Room

Yes (2-Way)

Rear (Covered)

No

Yes (3-Car with 10'x8' Doors)

Yes

A Modified Bi-Level Perfect for a Corner Lot: Superb curb appeal from the front and the side. In the middle of the multi roof lines, a short extended roof set on tall pillars over the entry makes this home stand out. The large open front entry leads to all areas of the home; access to the large 3-car garage, to the finished basement, or to the main floor. The ceiling in the front entry matches up with the ceiling on the second floor sitting room. The main floor has an open design with a vaulted ceiling over the kitchen and great room. The dining room is open to the kitchen which features a walk-in pantry and a large working island. Access to the rear deck from double garden doors. A two-way gas fireplace with built-in book shelves separates the great room & kitchen. The two bedrooms are large in size with a desk area. Up a few steps from the main floor and you are now looking down from the sitting area off the master bedroom. The large master bedroom features a walk-in closet and a five piece ensuite including a 60"x40" walk-in shower, corner jetted tub, plus his & hers sinks. From a double garden door, there is hide-a-way for Mom & Dad, a covered patio area. In the basement, there is access to the backyard from the covered patio area. A large games area with wet bar beside the theater room. Two large bedrooms with walk-in closets. This plan has all you'll want.

PROTECTED BY COPYRIGHT LAWS.
 PROPERTY OF **E-DESIGNS PLANS INC.**

E-Designs Plans Inc.

A western Canadian company from Alberta that designs and ships home plans all across Canada, the US, and Overseas.

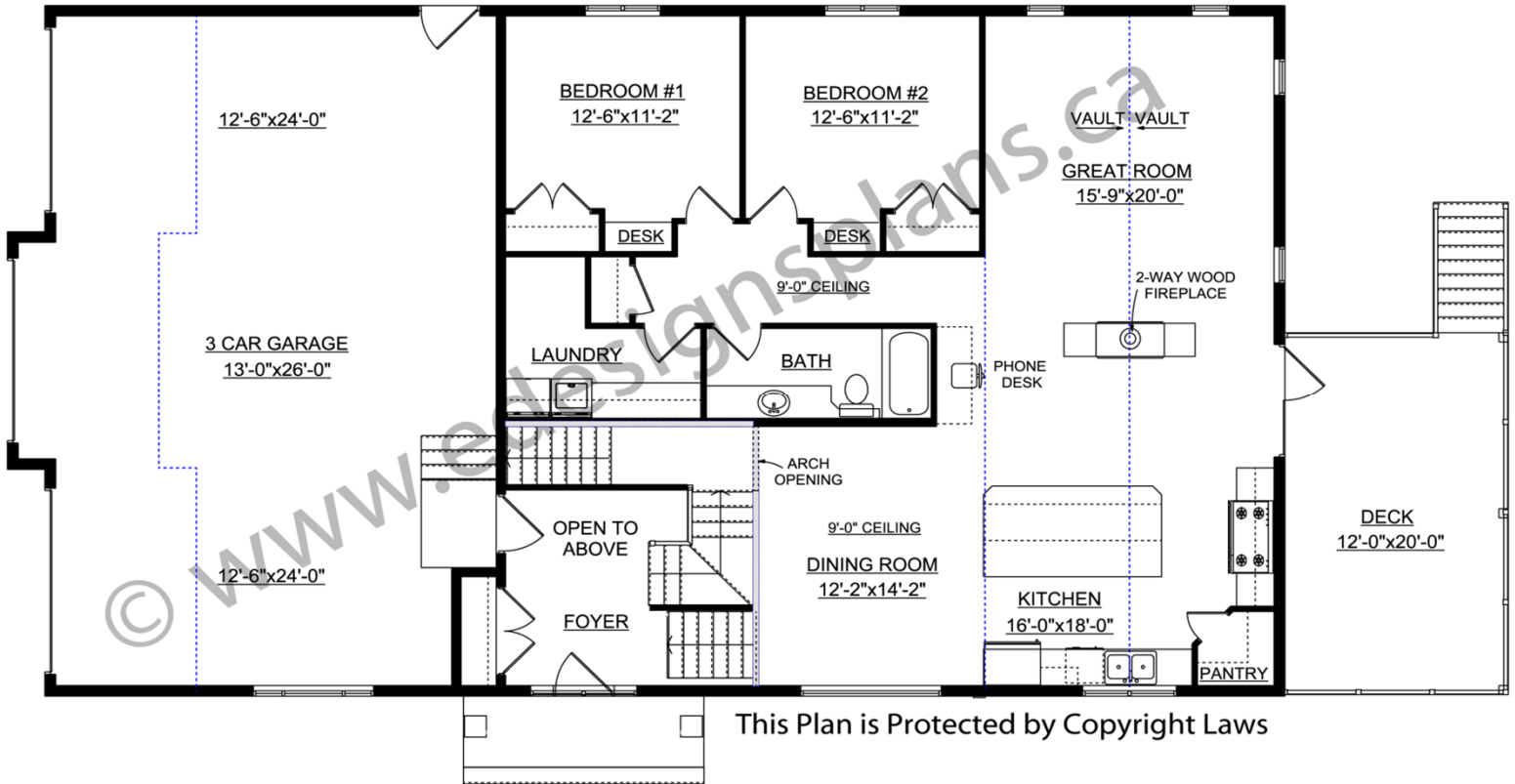
For more information about this plan contact the designer at: info@edesignsplans.ca.

Plan 2011543

www.edesignsplans.ca

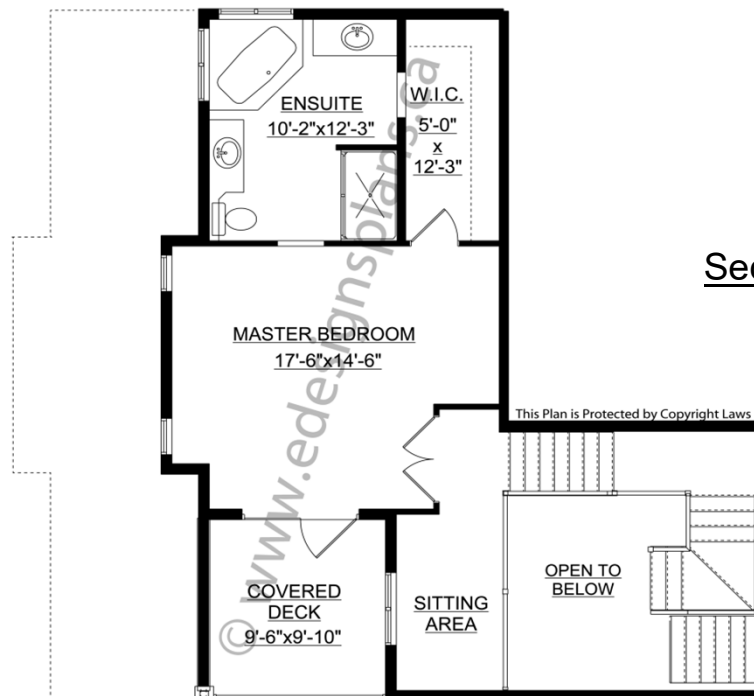
Call Us 1-855-675-1800

Main Floor



This Plan is Protected by Copyright Laws

Second Floor



This Plan is Protected by Copyright Laws

PROTECTED BY COPYRIGHT LAWS.
PROPERTY OF **E-DESIGNS PLANS INC.**

E-Designs Plans Inc.

A western Canadian company from Alberta that designs and ships home plans all across Canada, the US, and Overseas.

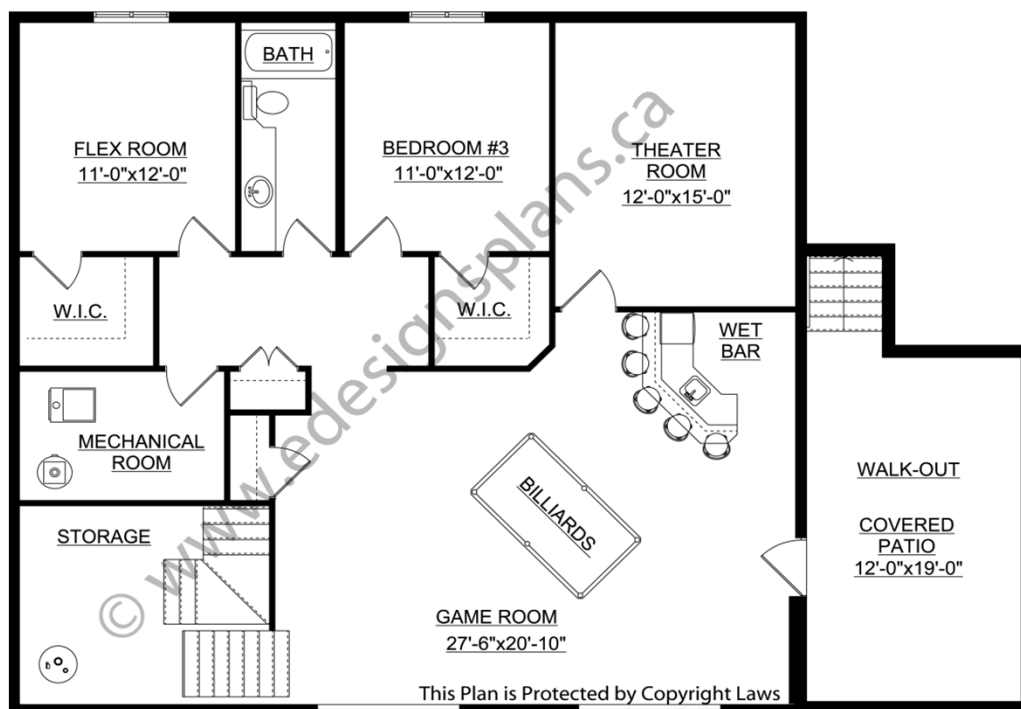
For more information about this plan contact the designer at: info@edesignsplans.ca.

Plan 2011543

www.edesignsplans.ca

[Call Us 1-855-675-1800](tel:1-855-675-1800)

Basement



PROTECTED BY COPYRIGHT LAWS.
PROPERTY OF **E-DESIGNS PLANS INC.**