

E-Designs *Plans Inc.*

A western Canadian company from Alberta that designs and ships home plans all across Canada, the US, and Overseas.

For more information about this plan contact the designer at: info@edesignsplans.ca.

Plan #: 2011551 Front Elevation

www.edesignsplans.ca

[Call Us 1-855-675-1800](tel:1-855-675-1800)



Rear Elevation



Bi-Level with Rental Suite in Lower Level

1132 Sq. Ft. Main Floor

907 Sq. Ft. Lower Floor

Width: 25'-0"
 Depth: 44'-6"
 Bedrooms: 3 Main/3 Lower
 Bathrooms: 1-1/2 Main/1 Lower
 Main Floor Laundry: Yes (& Lower)
 Walk-in Pantry: No
 Office/Den: No

Plan #: 2011551

Exterior Walls: 2x6 x 8 Ft. (Main Floor)
 Foundation: 4' 2x6 Pony Wall on 4' Concrete (Other Foundations Available)
 Special Ceilings: Vaulted Kitchen & Living Room
 Fireplace: No
 Deck(s): No
 Veranda: No
 Attached Garage: No
 Finished Basement Plan: Yes

Bi-Level with Rental Suite - Perfect for that smaller lot. This 3 bedroom basic covers starting off with a simple and cost effective design. Open style kitchen, dining and living rooms, all with a vaulted ceiling. Nice sized bedrooms and a main floor laundry room complete with a 2-piece bath. The lower level has been designed as a second suite with its own private entrance with access to the shared mechanical room at the bottom of the stairs. There are 3 bedrooms and a full 3-piece bath with a stackable washer & dryer. The kitchen, dining and living rooms are all open to each other. Large windows in all rooms to provide as much natural lighting as possible. This lower floor plan could easily be changed to be 2 bedrooms and a family room.

PROTECTED BY COPYRIGHT LAWS.
 PROPERTY OF ***E-DESIGNS PLANS INC.***

E-Designs Plans Inc.

A western Canadian company from Alberta that designs and ships home plans all across Canada, the US, and Overseas.

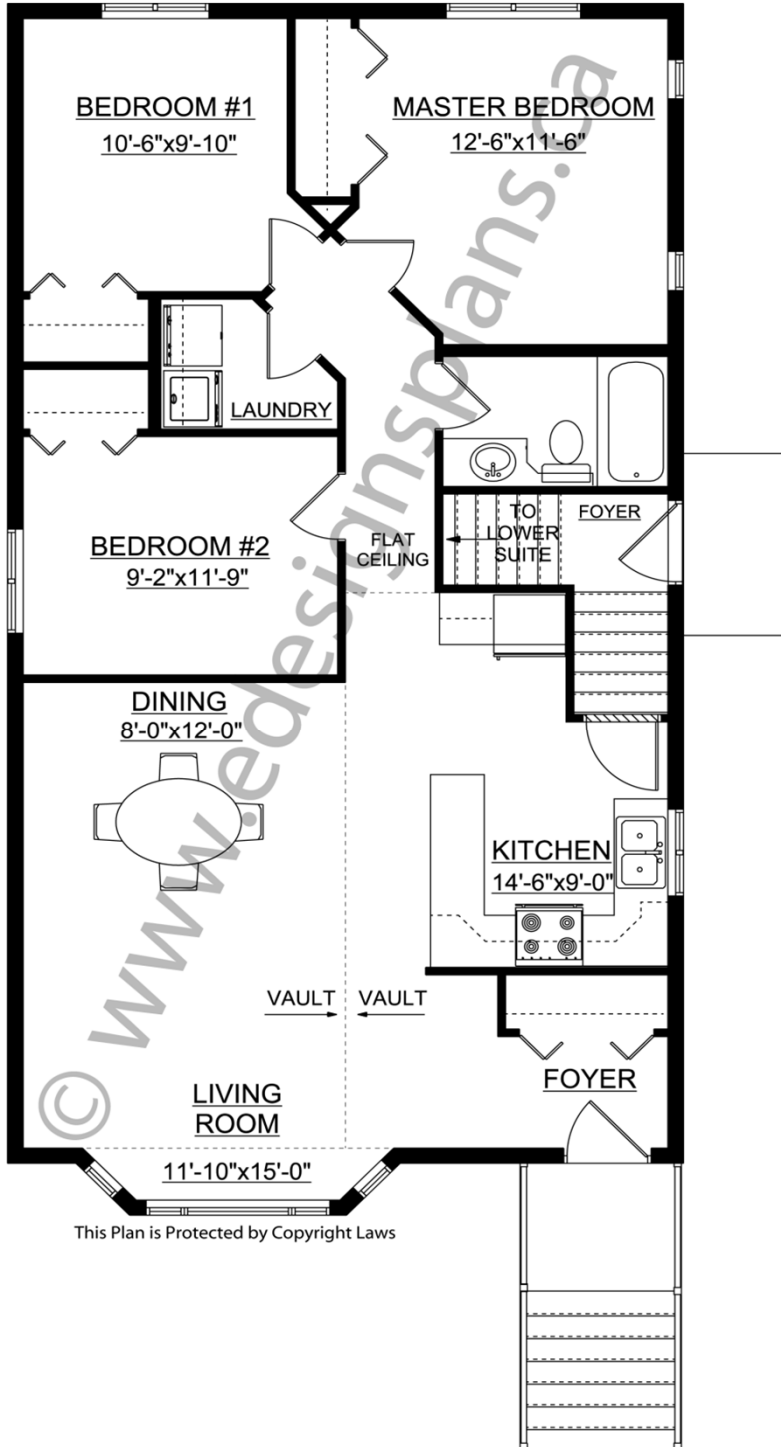
For more information about this plan contact the designer at: info@edesignsplans.ca.

Plan 2011551

www.edesignsplans.ca

Call Us 1-855-675-1800

Main Floor



Basement



PROTECTED BY COPYRIGHT LAWS.
PROPERTY OF **E-DESIGNS PLANS INC.**