

E-Designs *Plans Inc.*

A western Canadian company from Alberta that designs and ships home plans all across Canada, the US, and Overseas.

For more information about this plan contact the designer at: info@edesignsplans.ca.

Plan #: 2011555 Front Elevation

www.edesignsplans.ca

[Call Us 1-855-675-1800](tel:1-855-675-1800)



Rear Elevation

Bi-Level with Walkout Basement

1644 Sq. Ft. Main Floor

Width: 77'-0"
 Depth: 44'-0" (plus deck)
 Bedrooms: 2
 Bathrooms: 3
 Main Floor Laundry: Yes
 Walk-in Pantry: Yes
 Office/Den: No

Plan #: 2011555

Exterior Walls: 2x6 x 9 Ft. (Main Floor)
 Foundation: 9' ICF (Insulated Concrete Form) (Other Foundations Available)
 Special Ceilings: Vaulted
 Fireplace: Yes
 Deck(s): Front & Rear (Partially Covered)
 Veranda: No
 Attached Garage: Yes (2-Car with 10'x8' Doors)
 Finished Basement Plan: No

Bi-Level with Walkout Basement - A great country home plan. The perfect floor plan for a building site with a bit of grade slope. Using a small retaining wall is all that is needed here to make this into a walkout basement. The large dropped entry from the front or the rear features a corner closet, laundry room, a 2-piece bath, and access to the oversized garage. The garage features two 10'x8' overhead doors and access to the basement. If you're wanting loads of natural lighting, check out the open L-shaped kitchen that features a walk-in pantry, plus a huge working island complete with a lunch bar. Along with the dining room, the ceiling here is vaulted with rake head windows. A set of double garden doors lead out to the large front deck. A fireplace for those colder winter nights is located in the great room. The master bedroom has two closets and a 3-piece ensuite. The main bathroom is next to the guest bedroom. The basement is undeveloped except for the mechanical room so you can design it to meet your needs. The basement has large windows to allow lots of natural lighting. A set of double garden doors lead out to the covered front patio area. This is a perfect home for the farm or acreage.

E-Designs Plans Inc.

A western Canadian company from Alberta that designs and ships home plans all across Canada, the US, and Overseas.

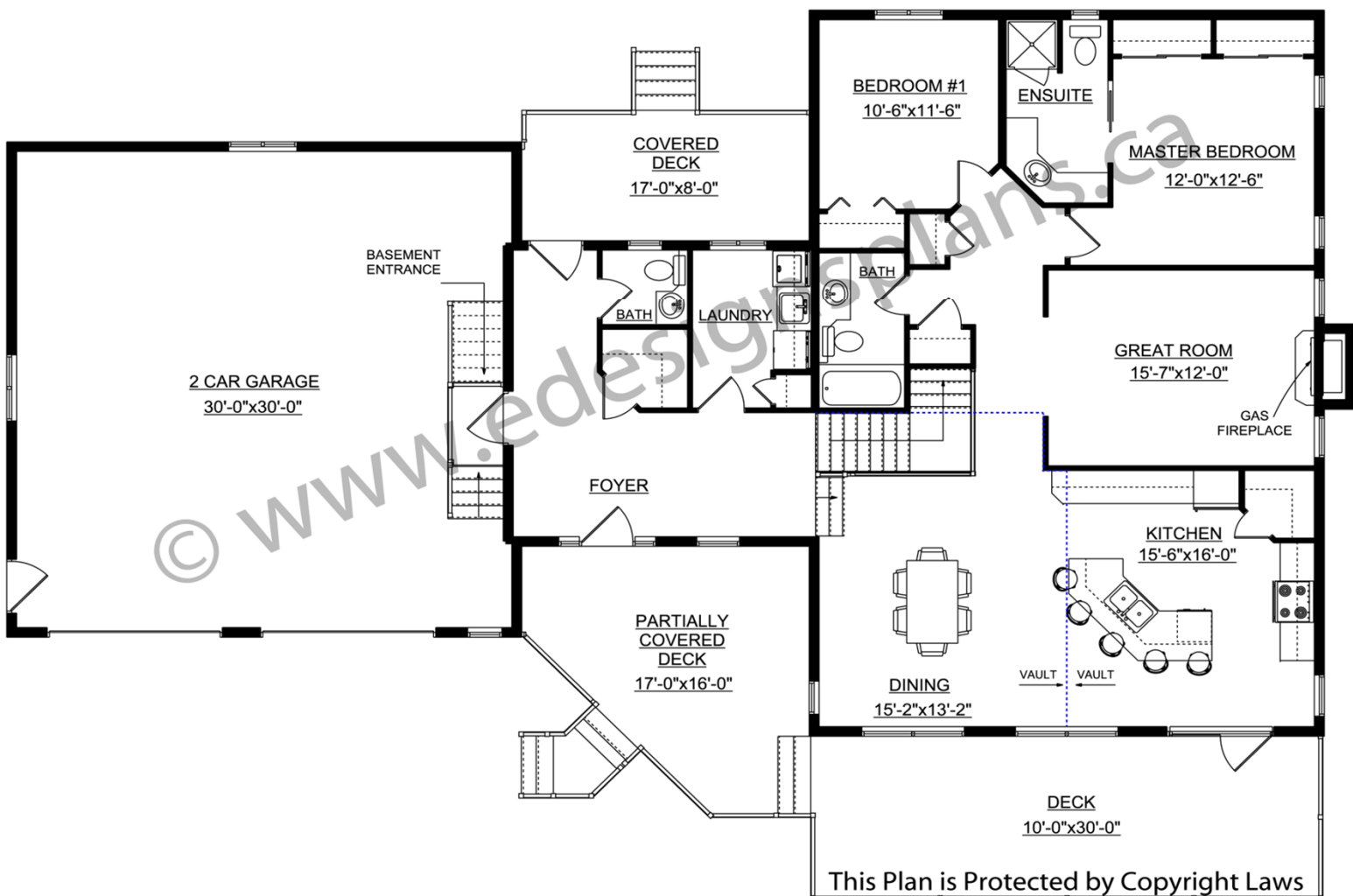
For more information about this plan contact the designer at: info@edesignsplans.ca.

Plan 2011555

www.edesignsplans.ca

[Call Us 1-855-675-1800](tel:1-855-675-1800)

Main Floor



PROTECTED BY COPYRIGHT LAWS.
PROPERTY OF **E-DESIGNS PLANS INC.**