

# *E-Designs* *Plans Inc.*

A western Canadian company from Alberta that designs and ships home plans all across Canada, the US, and Overseas.

For more information about this plan contact the designer at: [info@edesignsplans.ca](mailto:info@edesignsplans.ca).

**Plan #: 2012623 Front Elevation**

[www.edesignsplans.ca](http://www.edesignsplans.ca)

[Call Us 1-855-675-1800](tel:1-855-675-1800)



**Rear Elevation**



**Bi-Level with 3-Car Garage**  
**1544 Sq. Ft. Main Floor**

Width: 64'-0"  
Depth: 60'-6"  
Bedrooms: 3  
Bathrooms: 2  
Main Floor Laundry: Yes  
Walk-in Pantry: Yes  
Office/Den: No

**Plan #: 2012623**

Exterior Walls: 2x6 x 9 Ft. (Main Floor)  
Foundation: 4' 2x6 Pony Wall on 4' ICF  
(Other Foundations Available)  
Special Ceilings: None  
Fireplace: No  
Deck(s): Rear  
Veranda: No  
Attached Garage: Yes (3-Car 10'x8' & 18'x8' Doors)  
Finished Basement Plan: No

**Bi-Level with 3-Car Garage.** Great curb appeal in this cozy bi-level with a stylish craftsman post on the front. A sunken front entry leads up to the main living area. The living room, dining room, and kitchen are situated in an open-space practical concept and the dining room has garden doors leading onto the back deck. An island features an eating bar in this conveniently designed kitchen. The master bedroom is on the main floor with a 3-piece ensuite and walk-in closet. Main floor laundry is also a great feature of this house. Two additional bedrooms are located on the main floor as well. Convert one to an office or den if you like. This plan makes full use of the floor space, allowing for plenty of room where needed. You will love the 3-car garage with one 10'x8' and one 18'x8' overhead door. The basement is undeveloped so there are lots of options for additional space.

PROTECTED BY COPYRIGHT LAWS.  
PROPERTY OF ***E-DESIGNS PLANS INC.***

# E-Designs Plans Inc.

A western Canadian company from Alberta that designs and ships home plans all across Canada, the US, and Overseas.

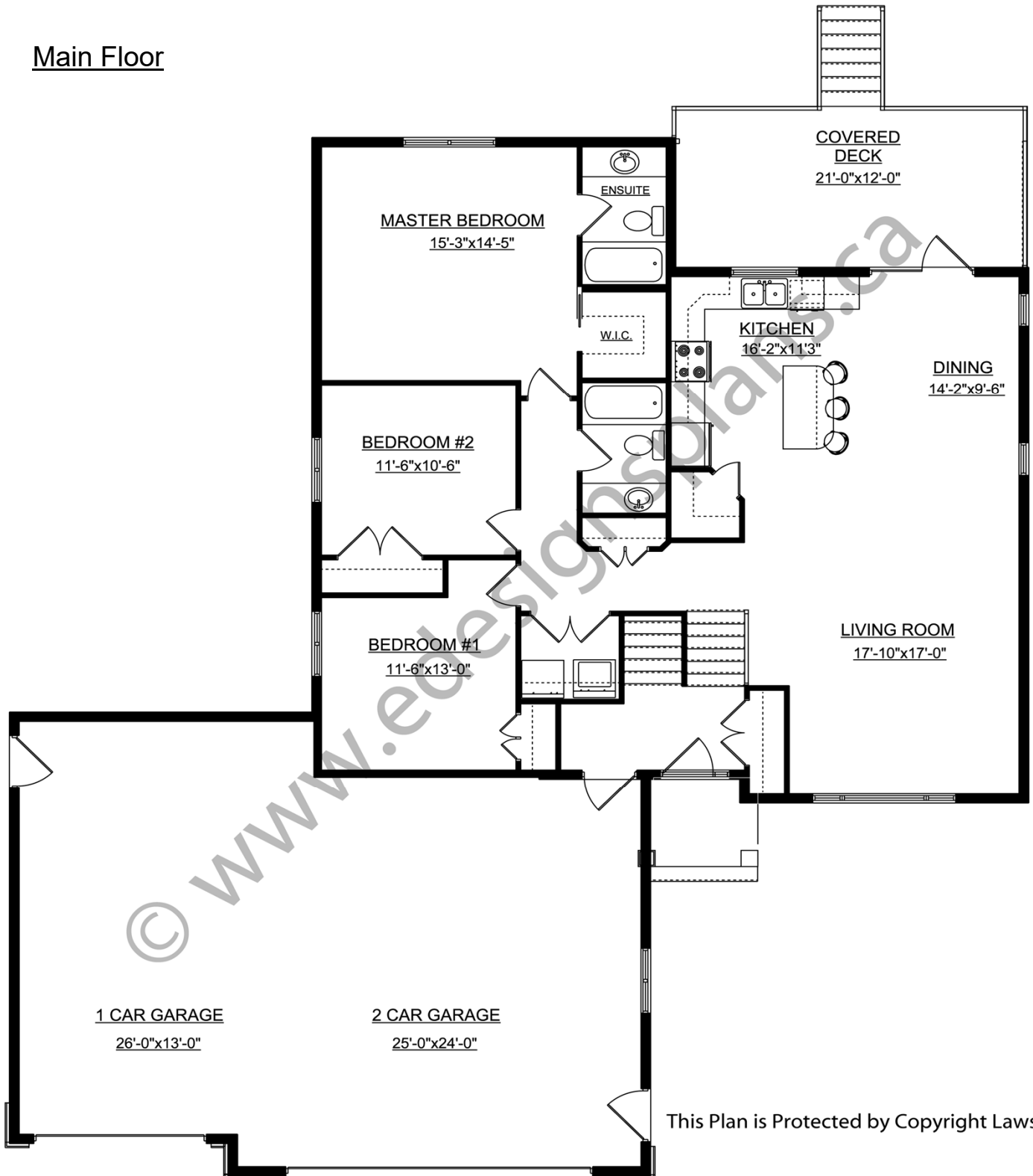
For more information about this plan contact the designer at: [info@edesignsplans.ca](mailto:info@edesignsplans.ca).

Plan 2012623

[www.edesignsplans.ca](http://www.edesignsplans.ca)

[Call Us 1-855-675-1800](tel:1-855-675-1800)

## Main Floor



This Plan is Protected by Copyright Laws

PROTECTED BY COPYRIGHT LAWS.  
PROPERTY OF **E-DESIGNS PLANS INC.**