

# *E-Designs* *Plans Inc.*

A western Canadian company from Alberta that designs and ships home plans all across Canada, the US, and Overseas.

For more information about this plan contact the designer at: [info@edesignsplans.ca](mailto:info@edesignsplans.ca).

**Plan #: 2013682 Front Elevation**

[www.edesignsplans.ca](http://www.edesignsplans.ca)

[Call Us 1-855-675-1800](tel:1-855-675-1800)



**Rear Elevation**



**Bi-Level with 2-Car Side Garage**  
**1456 Sq. Ft. Main Floor**

Width: 88'-0"  
Depth: 32'-0" (plus deck)  
Bedrooms: 5  
Bathrooms: 3  
Main Floor Laundry: No  
Walk-in Pantry: Yes  
Office/Den: No

**Plan #: 2013682**

Exterior Walls: 2x6 x 9 Ft. (Main Floor)  
Foundation: 5' 2x6 Pony Wall on 4' Concrete (Other Foundations Available)  
Special Ceilings: Vaulted Kitchen/Dining/Living Rm  
Fireplace: No  
Deck(s): Rear  
Veranda: No  
Attached Garage: Yes (2-Car with 10'x8' Doors)  
Finished Basement Plan: Yes

**Bi-Level with 2-Car Side Garage.** From the front foyer you enter up into the living room, kitchen and dining area, which has a vaulted ceiling. The dining room is open to the "U" shaped kitchen. A double garden door from the dining room leads out to a rear deck. The kitchen has a corner pantry and plenty of cabinet and counter space. An island with eating bar is also built in for additional seating. Down the hall are three bedrooms. The master bedroom has a 3-piece ensuite and walk-in closet. Two more bedrooms are located downstairs. A large game/media room and family room are centered between the bedrooms and storage/laundry room areas. You will love this oversize garage with two 10'x8' overhead doors and lots of room for a work bench area. A great plan for the farm or acreage.

**PROTECTED BY COPYRIGHT LAWS.**  
**PROPERTY OF *E-DESIGNS PLANS INC.***

# E-Designs Plans Inc.

A western Canadian company from Alberta that designs and ships home plans all across Canada, the US, and Overseas.

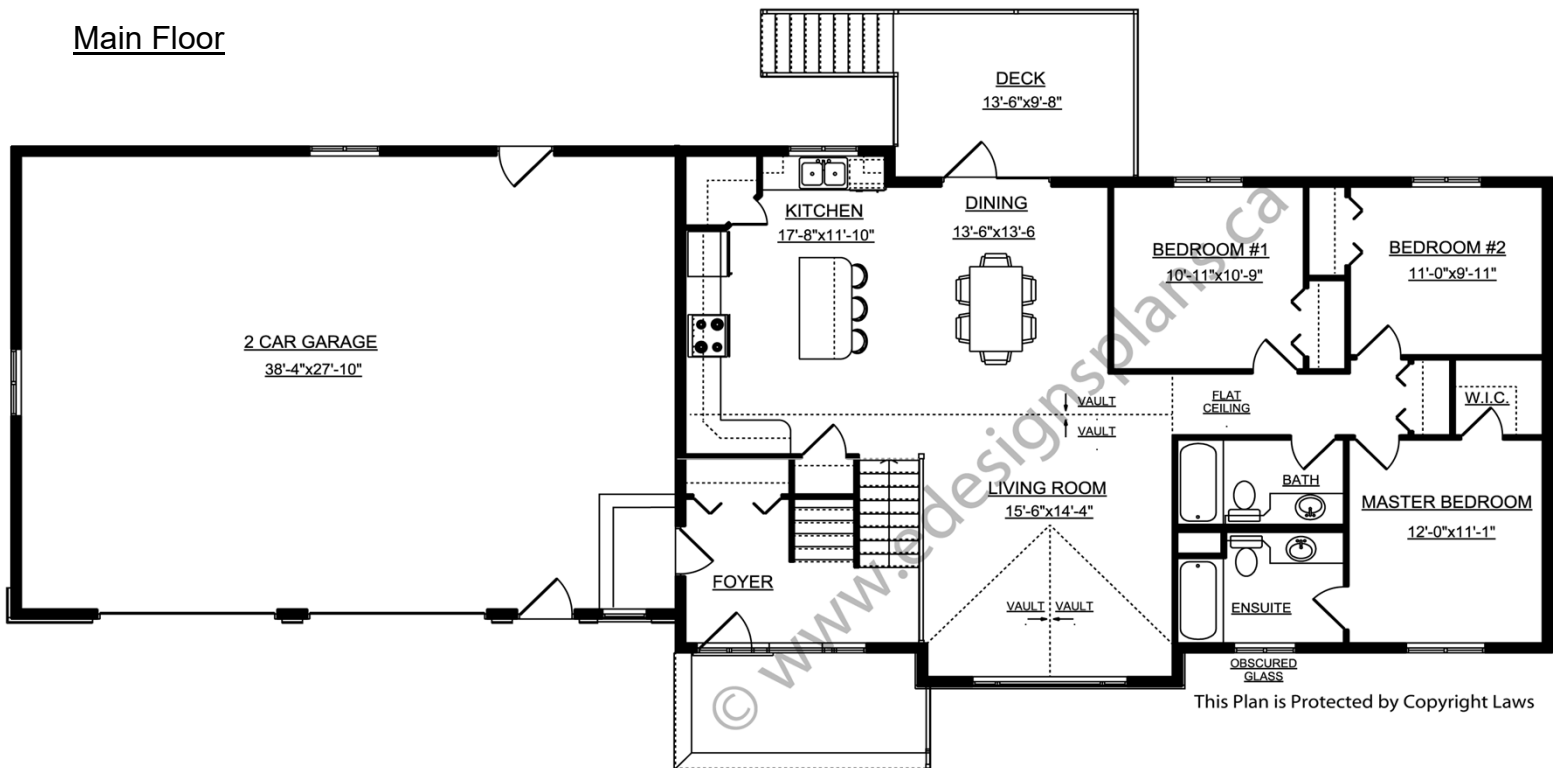
For more information about this plan contact the designer at: [info@edesignsplans.ca](mailto:info@edesignsplans.ca).

**Plan 2013682**

[www.edesignsplans.ca](http://www.edesignsplans.ca)

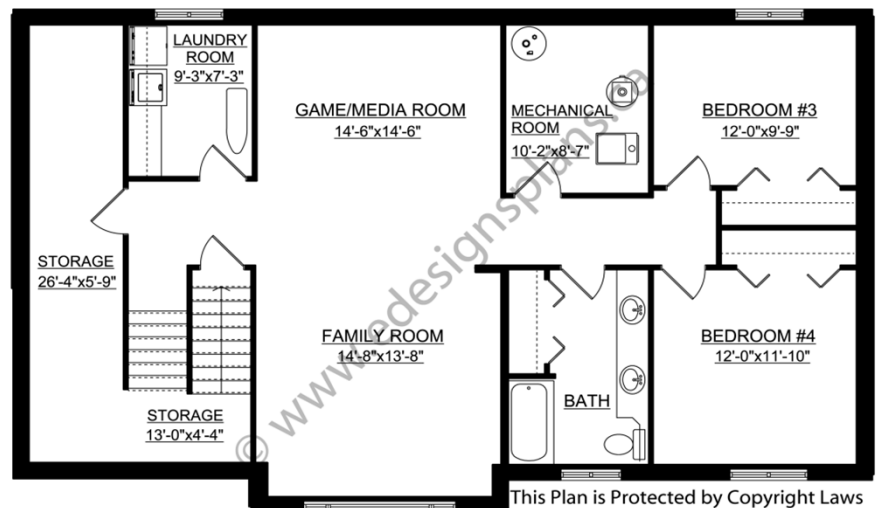
**Call Us 1-855-675-1800**

## Main Floor



This Plan is Protected by Copyright Laws

## Finished Basement



This Plan is Protected by Copyright Laws

PROTECTED BY COPYRIGHT LAWS.  
PROPERTY OF **E-DESIGNS PLANS INC.**