

E-Designs Plans Inc.

A western Canadian company from Alberta that designs and ships home plans all across Canada, the US, and Overseas.

For more information about this plan contact the designer at: info@edesignsplans.ca.

Plan #: 2013750 Front Elevation

www.edesignsplans.ca

Call Us 1-855-675-1800



Rear Elevation



Bi-Level with Bonus Room & 2-Car Garage

1406 Sq. Ft. Main Floor

491 Sq. Ft. Bonus Room

1897 Sq. Ft. Total Living Area

Width: 44'-0"
 Depth: 64'-6" (plus deck)
 Bedrooms: 4
 Bathrooms: 3
 Laundry: Lower Floor
 Walk-in Pantry: Secondary Kitchen
 Office/Den: Yes

Plan #: 2013750

Exterior Walls: 2x6 x 9 Ft. (Main Floor)
 2x6 x 9 Ft. (Bonus Room)
 Foundation: 5' 2x6 Pony Wall on 4' Concrete
 (Other Foundations Available)
 Special Ceilings: Vaulted Kitchen/Dining/Great Rm
 Fireplace: Yes
 Deck(s): Rear (Covered)
 Veranda: No
 Attached Garage: Yes (2-Car with 9'x8' Doors)
 Finished Basement Plan: Yes

Bi-Level with Bonus Room & 2-Car Garage. This has great curb appeal with its high entrance, large decorative post, and stone trim. A unique bi-level plan with a secondary kitchen that has a stove and sink in it, as well as more cupboard space. The main kitchen also has an island and is open to the dining room. The dining room flows into the great room, which has a gas fireplace for those cooler days. This main living area has a 4-way vault. Exit through double garden doors in the dining room to access the rear covered deck. There are two bedrooms on this level as well as a 3-piece bathroom and lots of linen closets. Up the stairs leads you to the bonus room, which is above the garage. Here is where the master bedroom lies with a full walk-in closet and 5-piece ensuite including a corner tub. The master bedroom has an inverted vault. The basement has a separate entrance through the laundry room in case you wish to rent it out as a suite. It has a family room, media room complete with wet bar, an additional bedroom, an office, and 3-piece bathroom, plus the mechanical room and a bit of storage. The office could easily be a 5th bedroom if needed. This bi-level also has a 2-car attached garage with 9'x8' overhead doors.

E-Designs Plans Inc.

A western Canadian company from Alberta that designs and ships home plans all across Canada, the US, and Overseas.

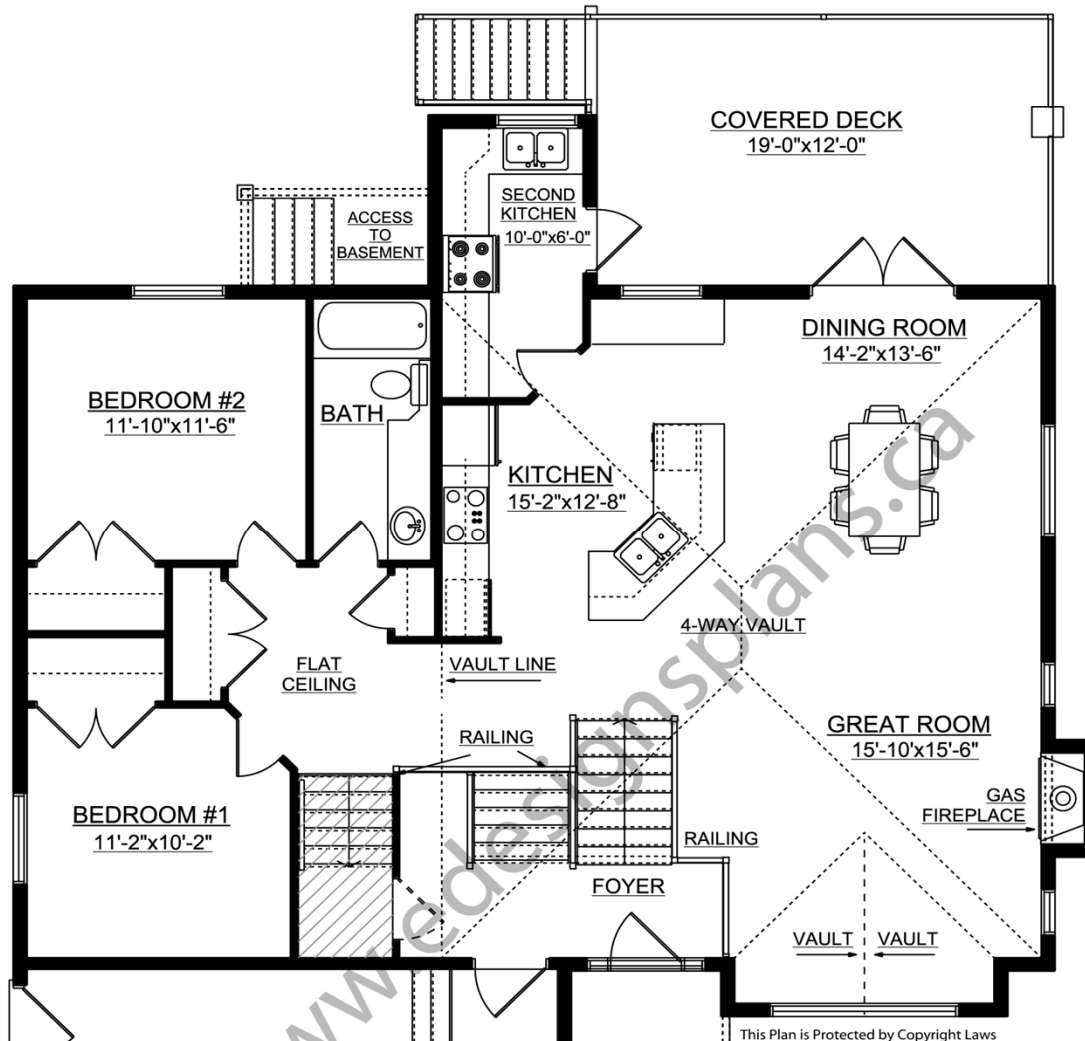
For more information about this plan contact the designer at: info@edesignsplans.ca.

Plan 2013750

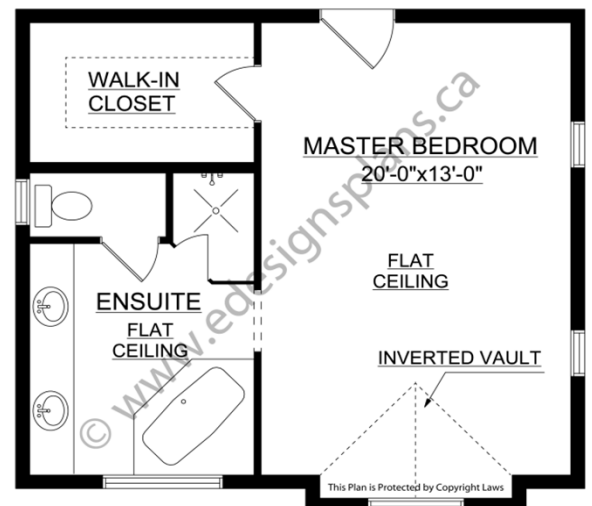
www.edesignsplans.ca

Call Us 1-855-675-1800

Main Floor



Second Floor



PROTECTED BY COPYRIGHT LAWS.
PROPERTY OF **E-DESIGNS PLANS INC.**

E-Designs Plans Inc.

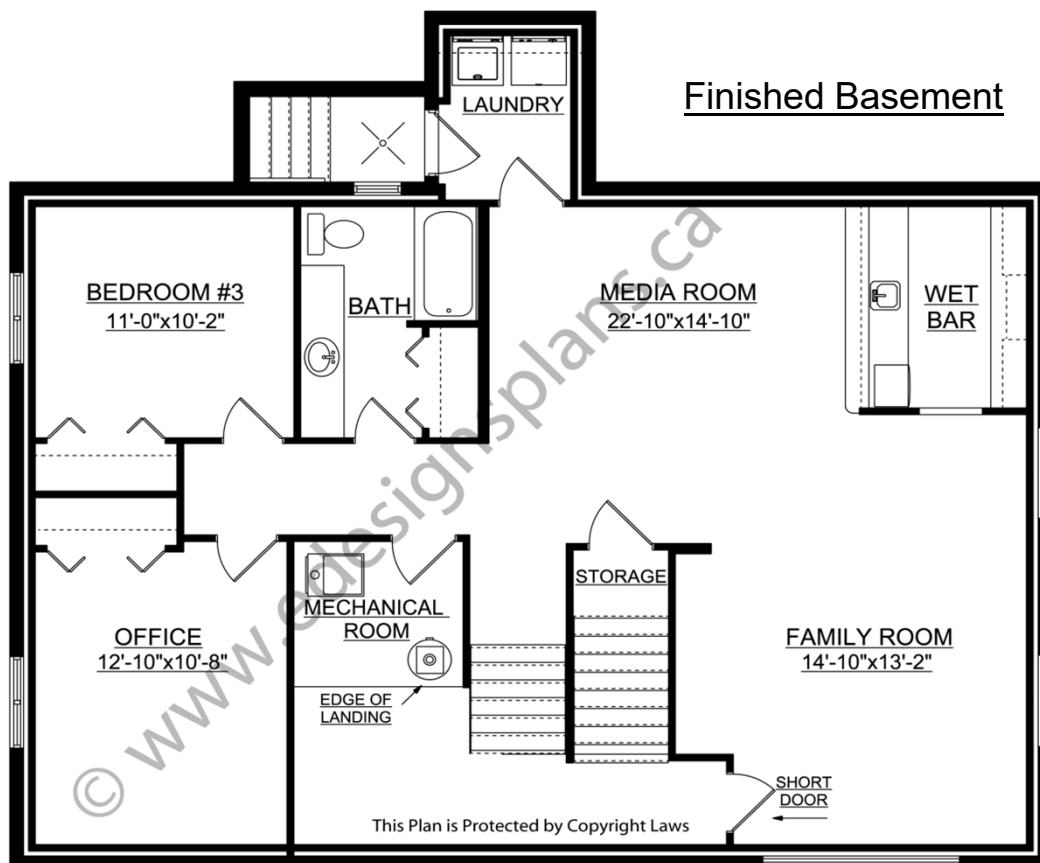
A western Canadian company from Alberta that designs and ships home plans all across Canada, the US, and Overseas.

For more information about this plan contact the designer at: info@edesignsplans.ca.

Plan 2013750

www.edesignsplans.ca

[Call Us 1-855-675-1800](tel:1-855-675-1800)



PROTECTED BY COPYRIGHT LAWS.
PROPERTY OF **E-DESIGNS PLANS INC.**