

E-Designs Plans Inc.

A western Canadian company from Alberta that designs and ships home plans all across Canada, the US, and Overseas.

For more information about this plan contact the designer at: info@edesignsplans.ca.

Plan #: 2014776 Front Elevation

www.edesignsplans.ca

Call Us 1-855-675-1800



Rear Elevation

Modified Bi-Level with 3-Car Garage

1941 Sq. Ft. Main Floor & Bonus Room

1182 Sq. Ft. Basement

3123 Sq. Ft. Total Living Area

Width: 57'-8" (+ fireplace)
 Depth: 59'-0" (plus deck)
 Bedrooms: 4
 Bathrooms: 3
 Main Floor Laundry: Yes
 Walk-in Pantry: Yes

Plan #: 2014776

Exterior Walls:

Foundation:

Special Ceilings:

Fireplace:

Deck(s):

Veranda:

Flex Room/Office:

Attached Garage:

Finished Basement Plan:

2x6 x 8 Ft. (Main Floor/Bonus Rm)

5' 2x6 Pony Wall on 4' Concrete
 (Other Foundations Available)

Vaulted Kitchen/Dining/Great Rm

Yes

Rear

No

Yes

Yes (3-Car - 9'x8' & 16'x8' Doors)

Yes

Bi-Level with Bonus Room Over 3-Car Garage. A great looking bi-level with its gable roof lines, artificial stone, and craftsman style post. Enter into the front foyer where you can go up to the main floor or down to the basement level. The great room has a gas fireplace. It is open to the kitchen and dining room where a vault runs through all three rooms, creating a great open concept. The dining room has double garden doors leading to the rear deck. The L-shaped kitchen has a corner pantry and a large island outlining the space with a lunch bar. This level has a 4-piece bathroom and two bedrooms, plus main floor laundry. Just up a few stairs from the hallway is the bonus room which features a large master suite with walk-in closet and 5-piece ensuite. The basement level has an additional bedroom as well as a flex room or office, a 3-piece bath, and a large family room with wet bar. A wood stove has been built into the corner for that cozy feeling. The mechanical room is a nice size and there is some storage under the stairs.

PROTECTED BY COPYRIGHT LAWS.
 PROPERTY OF **E-DESIGNS PLANS INC.**

E-Designs Plans Inc.

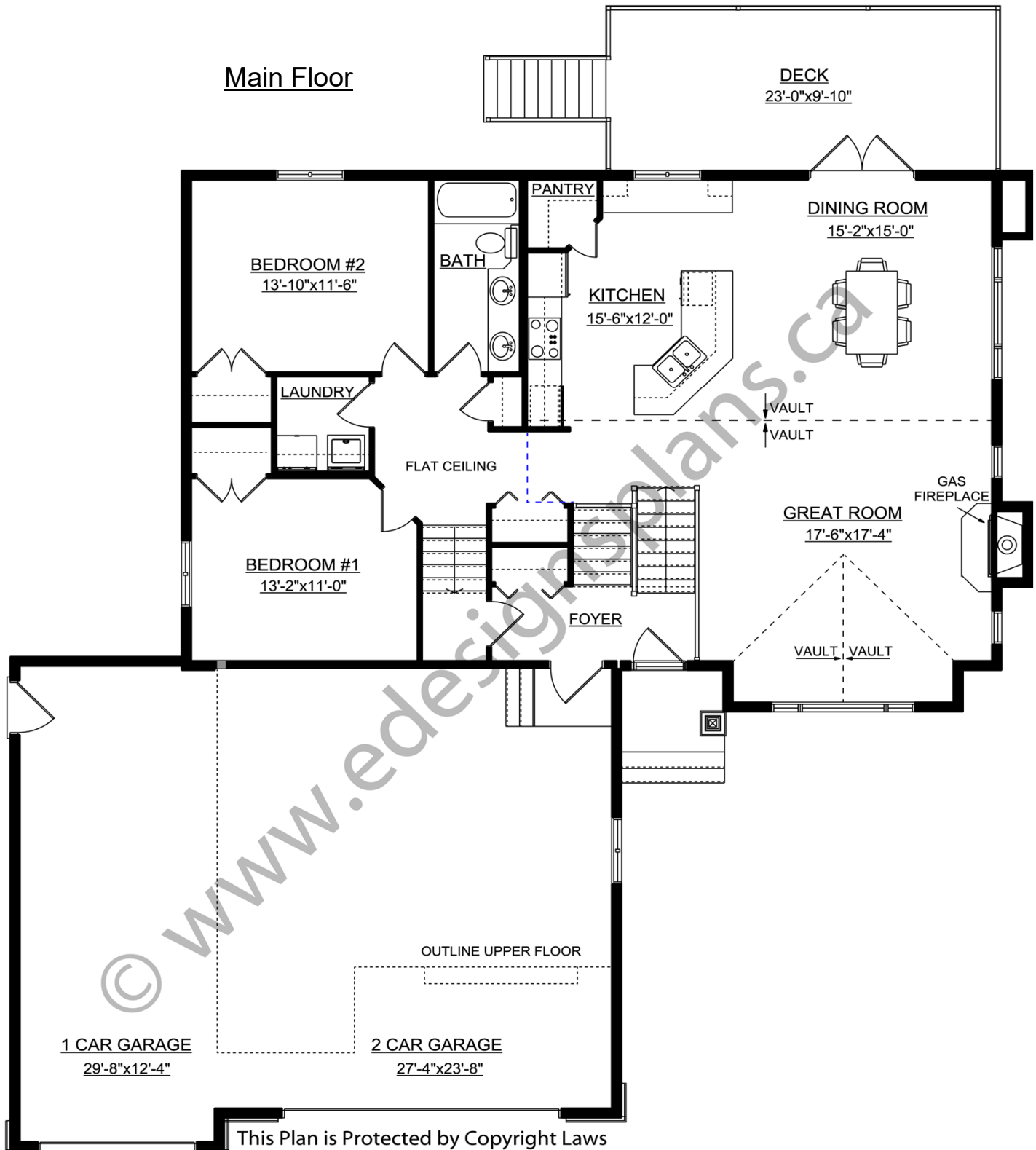
A western Canadian company from Alberta that designs and ships home plans all across Canada, the US, and Overseas.

For more information about this plan contact the designer at: info@edesignsplans.ca.

Plan 2014776

www.edesignsplans.ca

Call Us 1-855-675-1800



This Plan is Protected by Copyright Laws

PROTECTED BY COPYRIGHT LAWS.
PROPERTY OF **E-DESIGNS PLANS INC.**

E-Designs Plans Inc.

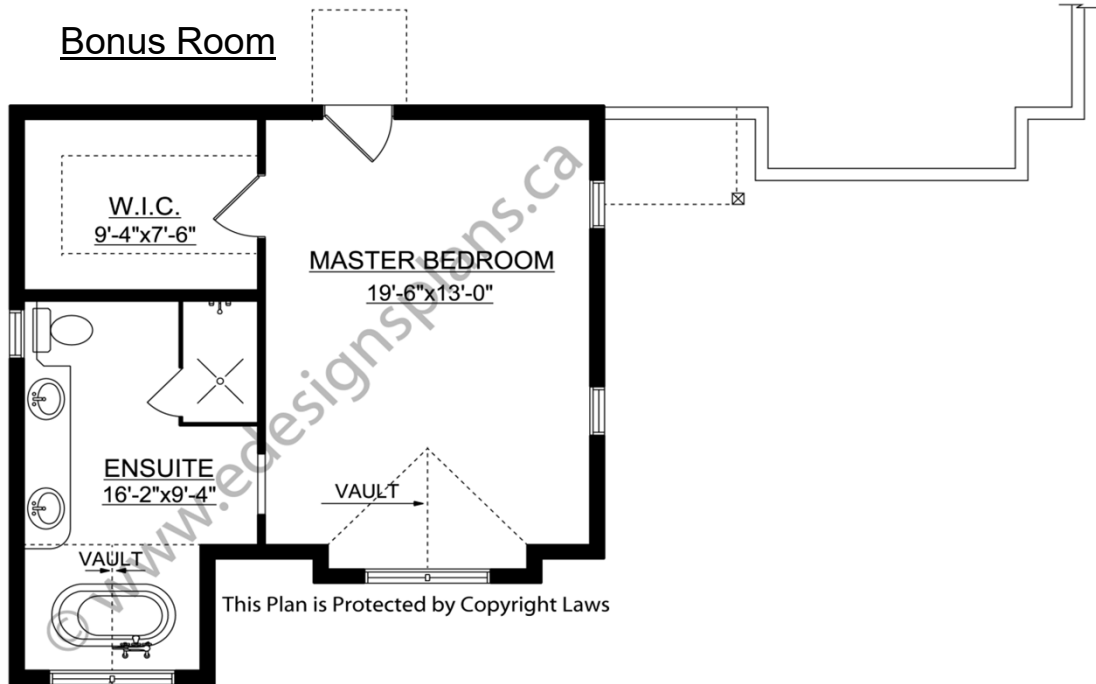
A western Canadian company from Alberta that designs and ships home plans all across Canada, the US, and Overseas.

For more information about this plan contact the designer at: info@edesignsplans.ca.

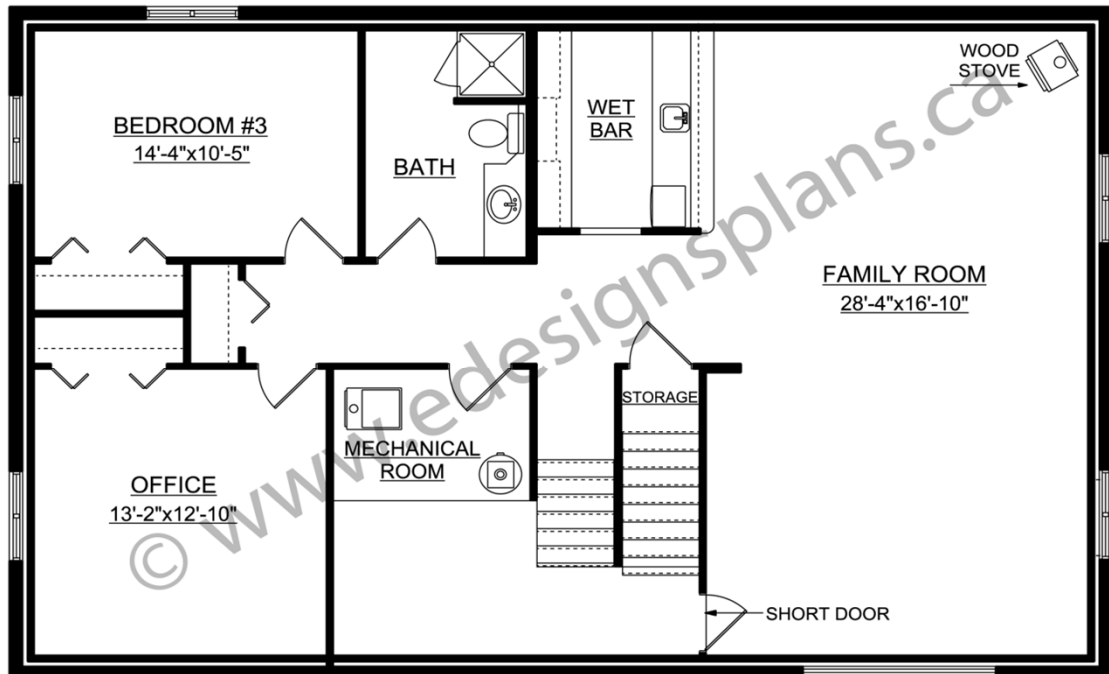
Plan 2014776

www.edesignsplans.ca

Call Us 1-855-675-1800



Basement



This Plan is Protected by Copyright Laws

PROTECTED BY COPYRIGHT LAWS.
PROPERTY OF **E-DESIGNS PLANS INC.**