

E-Designs Plans Inc.

A western Canadian company from Alberta that designs and ships home plans all across Canada, the US, and Overseas.

For more information about this plan contact the designer at: info@edesignsplans.ca.

Plan #: 2016975 Front Elevation

www.edesignsplans.ca

Call Us 1-855-675-1800



Rear Elevation



Modified Bi-Level with 2-Car Garage

1488 Sq. Ft. Main Floor

487 Sq. Ft. Second Floor

1975 Sq. Ft. Total Living Area

Width: 76'-0"

Depth: 44'-6" plus deck

Bedrooms: 5

Bathrooms: 3

Main Floor Laundry: Yes

Walk-in Pantry: Yes

Office/Den: No

Plan #: 2016975

Exterior Walls:

Foundation:

Special Ceilings:

Fireplace:

Deck(s):

Veranda:

Attached Garage:

Finished Basement Plan:

2x6 x 9 Ft. (Main Floor)

2x6 x 9 Ft. (Second Floor)

5' 2x6 Pony Wall on 4' ICF

(Other Foundations Available)

Vaulted Kitchen, Dining, Living Room

Yes

Rear & Bonus Room (Covered)

No

Yes (2-Car with 10'x8' Doors)

Yes

Modified Bi-Level with 2-Car Attached Garage

If you are looking for something different, this is the plan for you. Enter from the front covered step into the foyer, which has lockers and a walk-in closet. Up the stairs into the living room with corner fireplace. To the left of the stairs is the kitchen and dining room. The kitchen has a large island with lunch bar and a full-size pantry with freezer area. Sliding doors from the dining room lead onto the rear deck which has a dropped area for a hot tub. There is a large laundry room and 2 fair sized bedrooms on this level. Up the stairs above the garage is the master suite which has a 5-piece ensuite with custom shower, and a walk-in closet. Access to a full covered deck to enjoy off the master bedroom. Downstairs are 2 more bedrooms and a large recreation room with wet bar, storage room, and mechanical room with more storage under the landing.

E-Designs Plans Inc.

A western Canadian company from Alberta that designs and ships home plans all across Canada, the US, and Overseas.

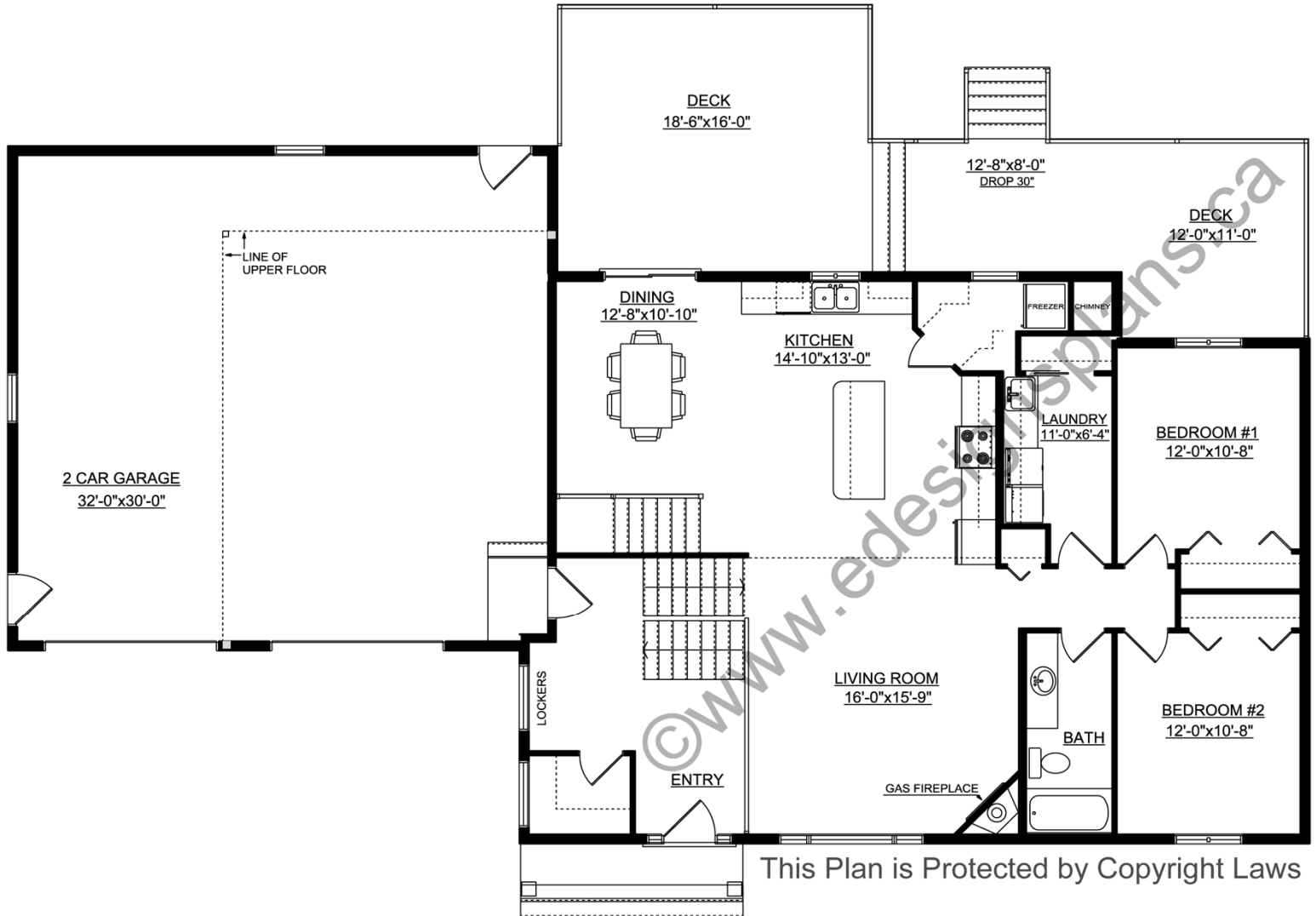
For more information about this plan contact the designer at: info@edesignsplans.ca.

Plan 2016975

www.edesignsplans.ca

[Call Us 1-855-675-1800](tel:1-855-675-1800)

Main Floor



E-Designs Plans Inc.

A western Canadian company from Alberta that designs and ships home plans all across Canada, the US, and Overseas.

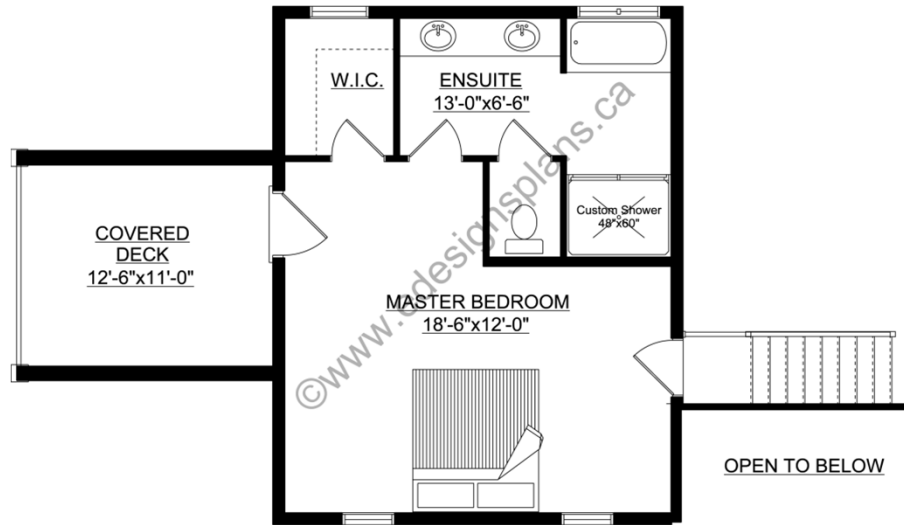
For more information about this plan contact the designer at: info@edesignsplans.ca.

Plan 2016975

www.edesignsplans.ca

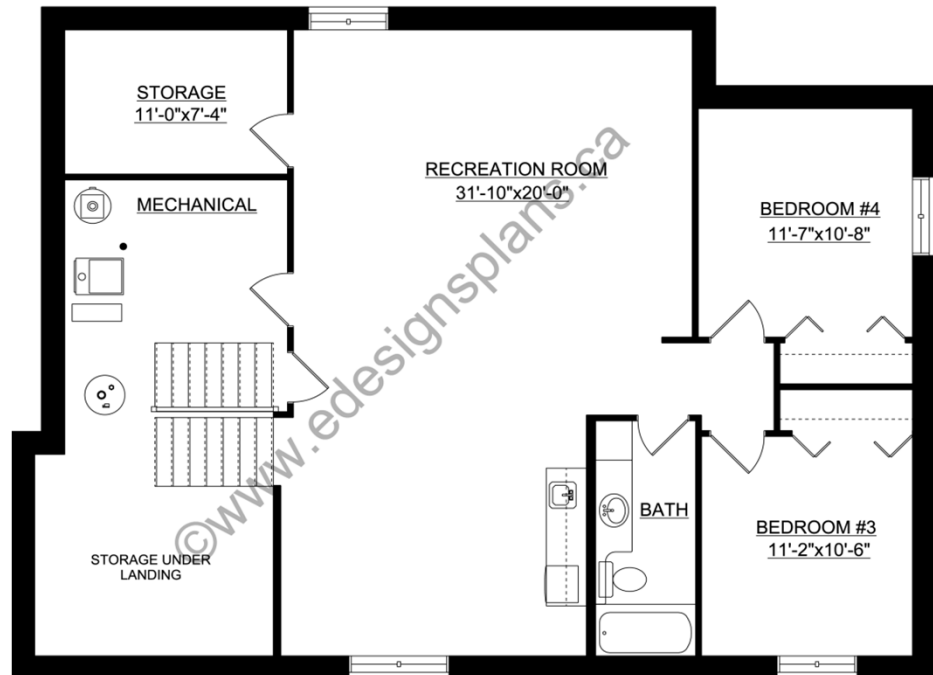
Call Us 1-855-675-1800

Second Floor



This Plan is Protected by Copyright Laws

Basement



This Plan is Protected by Copyright Laws

PROTECTED BY COPYRIGHT LAWS.
PROPERTY OF **E-DESIGNS PLANS INC.**