

E-Designs Plans Inc.

A western Canadian company from Alberta that designs and ships home plans all across Canada, the US, and Overseas.

For more information about this plan contact the designer at: info@edesignsplans.ca.

Plan #: 2016983 Front Elevation

www.edesignsplans.ca

Call Us 1-855-675-1800



Rear Elevation



Modified Bi-Level with 2-Car Garage

1066 Sq. Ft. Main Floor
301 Sq. Ft. Second Floor
 1367 Sq. Ft. Total Living Area

Width: 34'-0"
 Depth: 77'-0"
 Bedrooms: 4
 Bathrooms: 3
 Main Floor Laundry: No
 Walk-in Pantry: No
 Office/Den: No

Plan #: 2016983

Exterior Walls: 2x6 x 9 Ft. (Main Floor)
 2x6 x 8 Ft. (Second Floor)
 Foundation: 4' Pony Wall on 5' Concrete
 (Other Foundations Available)
 Special Ceilings: Vaulted
 Fireplace: Yes
 Deck(s): Rear
 Veranda: No
 Attached Garage: Yes (2-Car with 18'x7' Door)
 Finished Basement Plan: Yes

Modified Bi-Level with 2-Car Garage. From the front dropped entry you can go upstairs to the main level or downstairs to the basement level. The main living area is open concept and vaulted for a larger look. A fireplace sits between 2 built-in bookshelves in the great room. Double garden doors lead to the rear deck. There are 2 bedrooms on this level with the master bedroom above the garage. It is bayed on one side for more space, and has a large walk-in closet and 4-piece ensuite. Downstairs is another bedroom with its own walk-in closet, a large family room, laundry room, and warm and cold storage areas. A full bath complements this level. The 2-car garage is a nice size with an 18'x8' door.

E-Designs Plans Inc.

A western Canadian company from Alberta that designs and ships home plans all across Canada, the US, and Overseas.

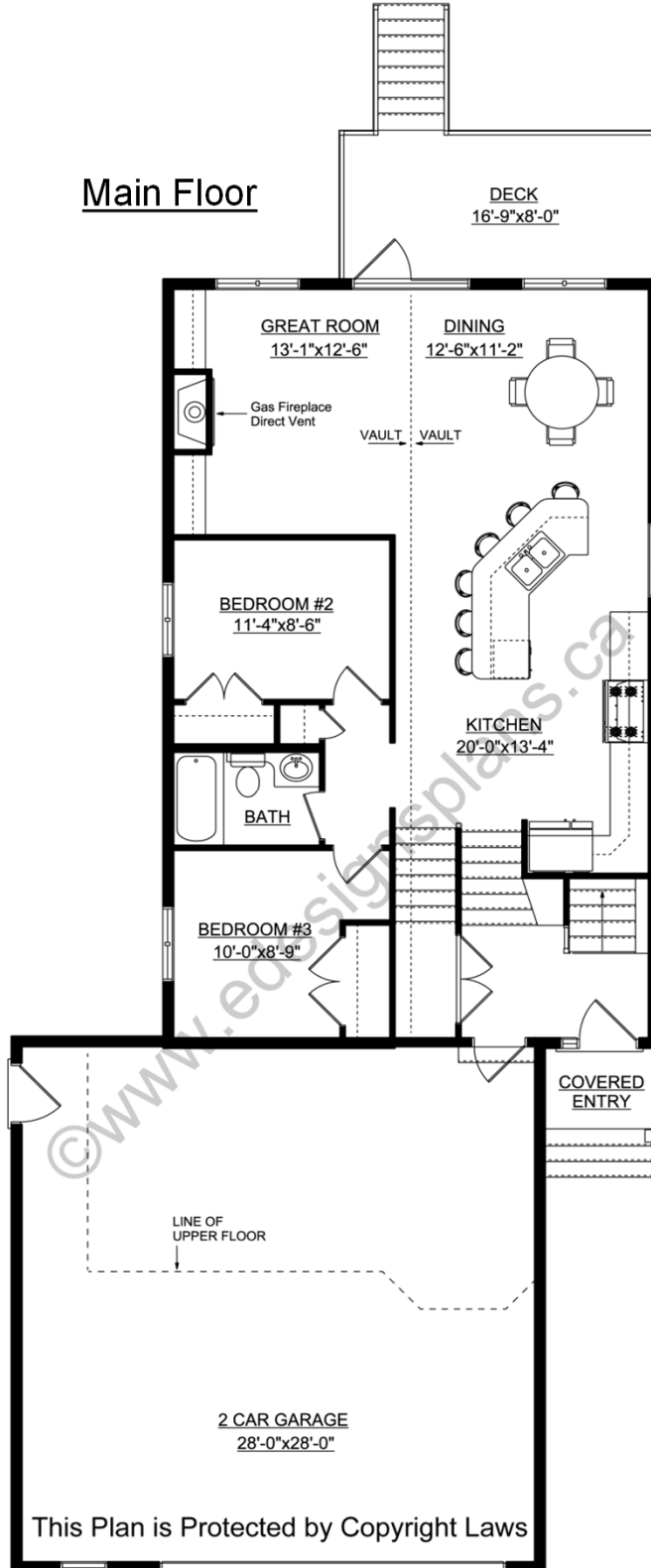
For more information about this plan contact the designer at: info@edesignsplans.ca.

Plan 2016983

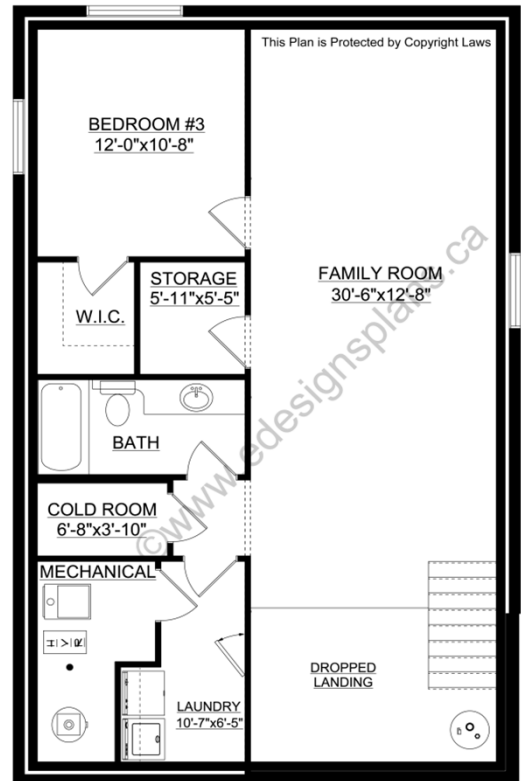
www.edesignsplans.ca

Call Us 1-855-675-1800

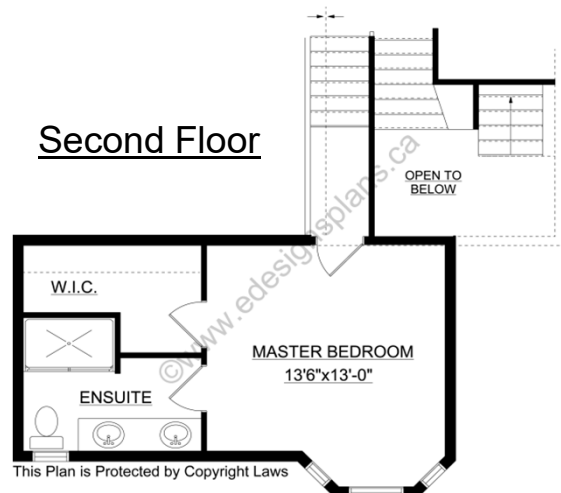
Main Floor



Basement



Second Floor



PROTECTED BY COPYRIGHT LAWS.
PROPERTY OF **E-DESIGNS PLANS INC.**