

E-Designs Plans Inc.

A western Canadian company from Alberta that designs and ships home plans all across Canada, the US, and Overseas.

For more information about this plan contact the designer at: info@edesignsplans.ca.

Plan #: 2016997 Front Elevation

www.edesignsplans.ca

Call Us 1-855-675-1800



Front Right Elevation



Rear Elevation

Modified Bi-Level with 1-Car Garage

1432 Sq. Ft. Main Floor
334 Sq. Ft. Second Floor
1766 Sq. Ft. Total Living Area

Width: 46'-0"
Depth: 52'-8" plus deck
Bedrooms: 2
Bathrooms: 3
Main Floor Laundry: Yes
Walk-in Pantry: No
Office/Den: Yes

Plan #: 2016997

Exterior Walls: 2x6 x 9 Ft. (Main Floor)
2x6 x 8 Ft. (Second Floor)
Foundation: 4' Pony Wall on 5' Concrete Wall
(Other Foundations Available)
Special Ceilings: None
Fireplace: No
Deck(s): Rear
Veranda: No
Attached Garage: Yes (1-Car with 10'x7' Door)
Finished Basement Plan: Yes - With Suite

Modified Bi-Level with 1-Car Garage. From the front foyer, you can go upstairs to the main level or downstairs to the lower level. Upstairs is an open concept kitchen, dining and great room. Double garden doors lead out to the rear deck. The master bedroom is on the main floor and has a large walk-in closet and 4-piece ensuite. Across from the master bedroom is a home office, which could easily be another bedroom, too. Up the short stairs by the laundry room takes you to the bonus room above the garage. The garage is big enough for 1 vehicle plus a workshop area. Downstairs is another bedroom, family room, mechanical, and a full 3-piece bathroom. A separate outside entrance takes you to a basement suite which has 2 bedrooms, kitchen, dinette, living room, bathroom, and a laundry area. This is great as a separate rental unit.

E-Designs Plans Inc.

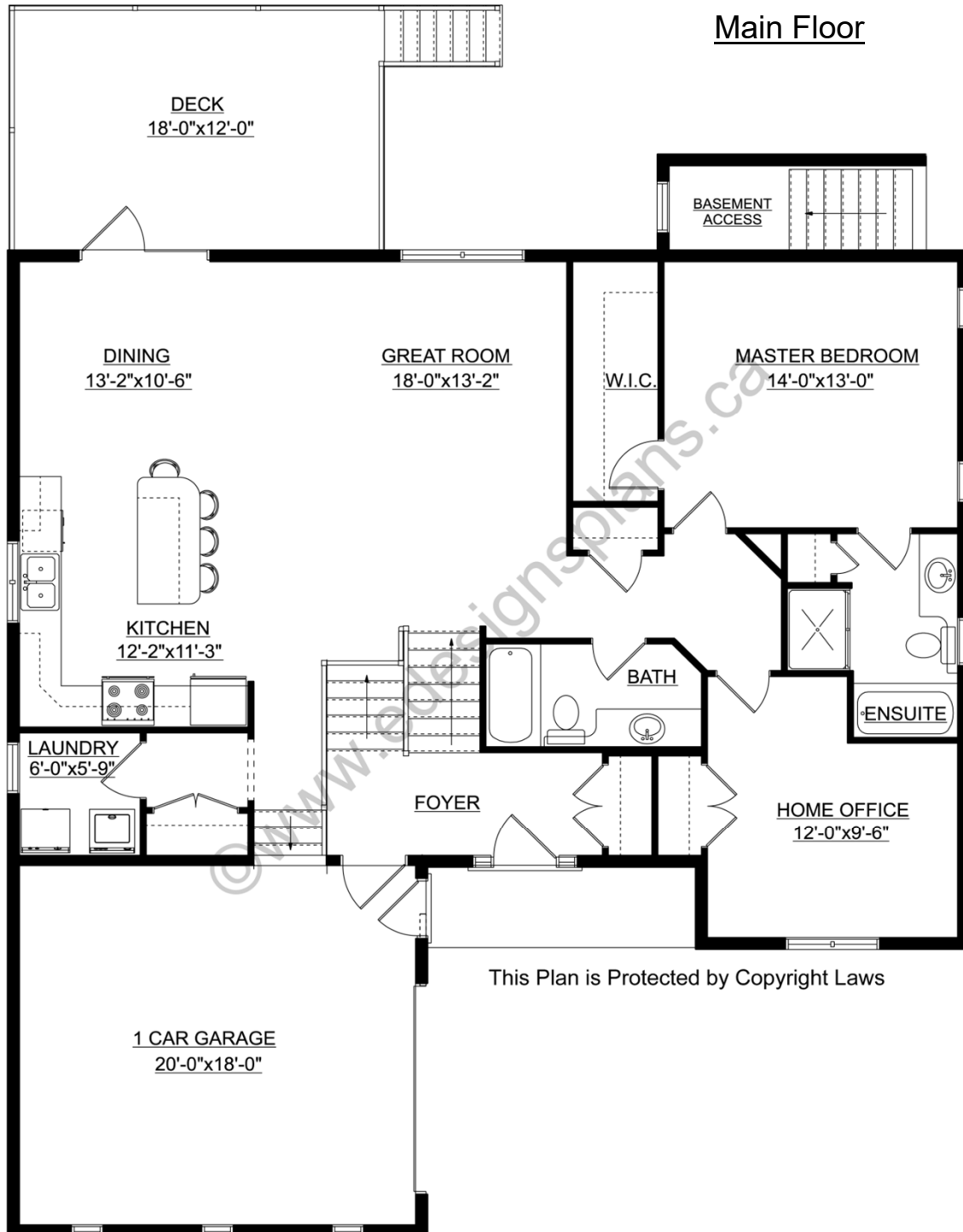
A western Canadian company from Alberta that designs and ships home plans all across Canada, the US, and Overseas.

For more information about this plan contact the designer at: info@edesignsplans.ca.

Plan 2016997

www.edesignsplans.ca

[Call Us 1-855-675-1800](tel:1-855-675-1800)



This Plan is Protected by Copyright Laws

E-Designs Plans Inc.

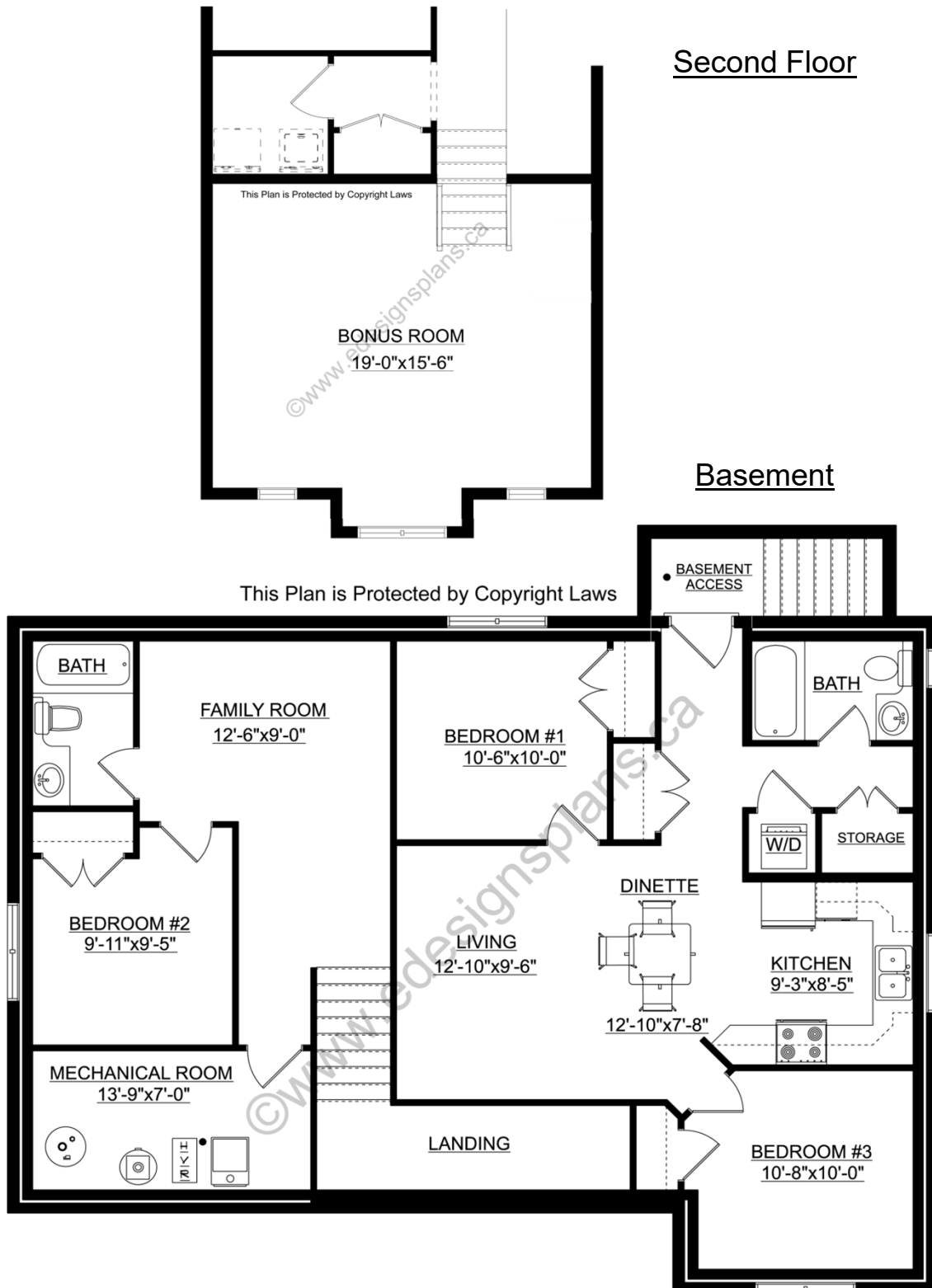
A western Canadian company from Alberta that designs and ships home plans all across Canada, the US, and Overseas.

For more information about this plan contact the designer at: info@edesignsplans.ca.

Plan 2016997

www.edesignsplans.ca

Call Us 1-855-675-1800



PROTECTED BY COPYRIGHT LAWS.
PROPERTY OF **E-DESIGNS PLANS INC.**