

E-Designs Plans Inc.

A western Canadian company from Alberta that designs and ships home plans all across Canada, the US, and Overseas.

For more information about this plan contact the designer at: info@edesignsplans.ca.

Plan #: 2018219 Front Elevation

www.edesignsplans.ca

[Call Us 1-855-675-1800](tel:1-855-675-1800)



Rear Elevation



Spacious ICF Bi-Level with 2-Car Garage
1456 Sq. Ft. Main Floor

Width: 88'-0"
Depth: 31'-10" plus Deck
Bedrooms: 5
Bathrooms: 3
Main Floor Laundry: No
Walk-in Pantry: Yes
Office/Den: No

Plan #: 2018219

Exterior Walls:
Foundation:

Special Ceilings:

Fireplace:

Deck(s):

Veranda:

Attached Garage:

Finished Basement Plan:

8' ICF (Main Floor)
9' ICF (Insulated Concrete Form)
(Other Foundations Available)
Vaulted Kitchen, Dining, Living Room
No
Rear
No
Yes (2-Car with 10'x8' Doors)
Yes

Spacious ICF Bi-Level with 2-Car Garage. This bi-level home offers a spacious and functional design, perfect for modern living. The ICF foundation and main exterior walls ensure energy efficiency and durability. Enjoy an inviting living room, kitchen, and dining area under vaulted ceilings. The dropped front foyer provides direct access to a large, attached garage. The U-shaped kitchen boasts a corner pantry and island with a lunch counter, while the great room features a large window with an inverted vault. The master bedroom includes a three-piece bath and walk-in closet, with two additional bedrooms on the main floor. The finished basement offers two large bedrooms, a four-piece bath, and an open family room with no posts, plus a conveniently located laundry room and ample storage. Large 40-inch high basement windows ensure a bright and welcoming space, eliminating dark and dreary basements. Perfect for families, this home combines comfort and practicality with style.

E-Designs Plans Inc.

A western Canadian company from Alberta that designs and ships home plans all across Canada, the US, and Overseas.

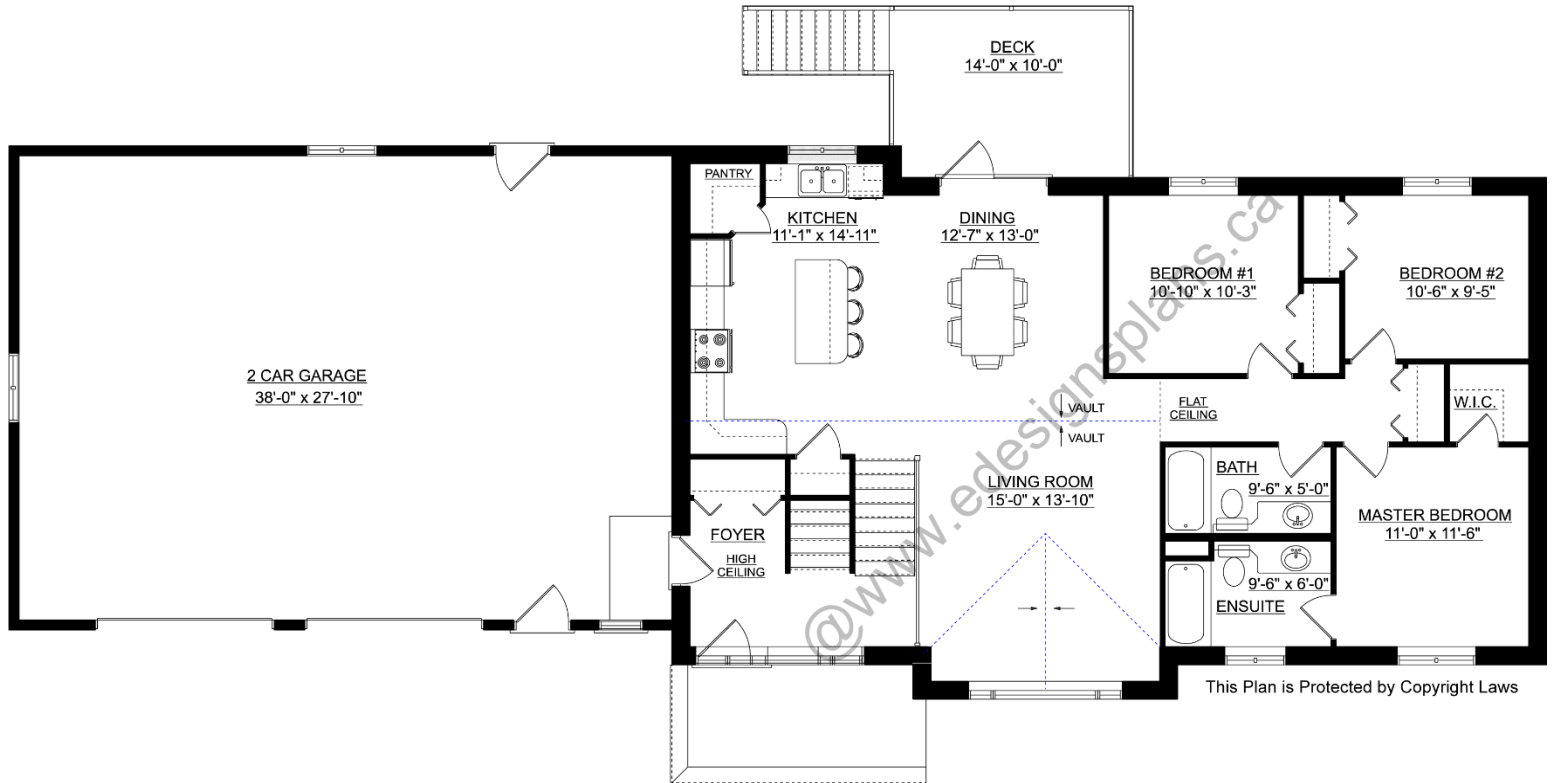
For more information about this plan contact the designer at: info@edesignsplans.ca.

Plan 2018219

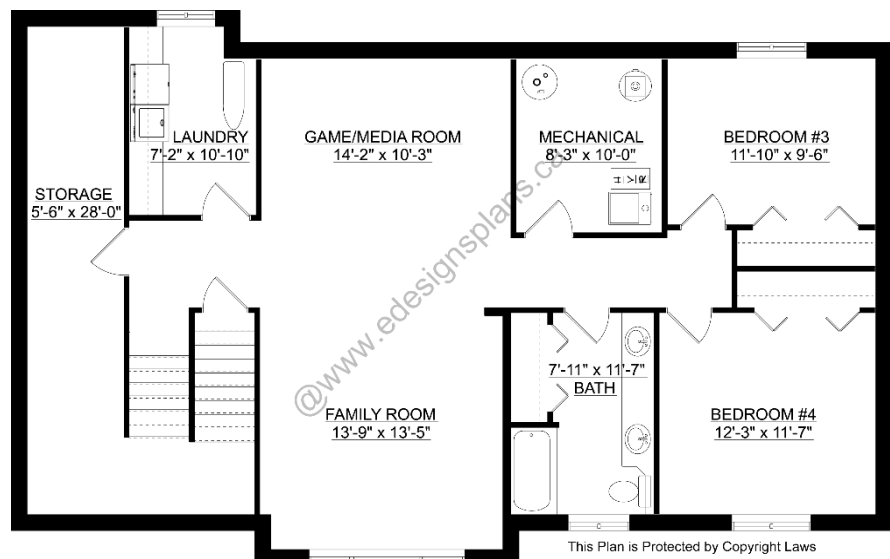
www.edesignsplans.ca

Call Us 1-855-675-1800

Main Floor



Basement



PROTECTED BY COPYRIGHT LAWS.
PROPERTY OF **E-DESIGNS PLANS INC.**