

E-Designs *Plans Inc.*

A western Canadian company from Alberta that designs and ships home plans all across Canada, the US, and Overseas.

For more information about this plan contact the designer at: info@edesignsplans.ca.

Plan #: 2019260 Front Elevation

www.edesignsplans.ca

[Call Us 1-855-675-1800](tel:1-855-675-1800)



Rear Elevation



Bi-Level with 2-Car Garage & Private Entrance

1447 Sq. Ft. Main Floor

Width: 41'-6"
Depth: 64'-0" plus Deck
Bedrooms: 3
Bathrooms: 2
Main Floor Laundry: Yes
Walk-in Pantry: Yes
Office/Den: No

Plan #: 2019260

Exterior Walls: 2x6 x 9 Ft. (Main Floor)
Foundation: 4' Pony Wall on 4' Concrete Wall (Other Foundations Available)
Special Ceilings: None
Fireplace: No
Deck(s): Rear (Covered)
Veranda: Covered Entry
Attached Garage: Yes 2-Car with 16'x7' Door)
Finished Basement Plan: No

Bi-Level with 2-Car Garage & Private Basement Entrance. A great plan for a town lot based on the width and design. The grand covered front entrance with large pillars give this plan curb appeal as well. There are three bedrooms and laundry on the main floor with the master suite having its own 3-piece bathroom and walk-in-closet. The kitchen, nook and living room are all open concept. Double french doors from the nook lead to a partially covered rear deck. A separate private entrance from the side of the attached 2-car garage goes directly to the basement level. A basement suite could be one option in this design, or it could just be left as a private entrance.

E-Designs Plans Inc.

A western Canadian company from Alberta that designs and ships home plans all across Canada, the US, and Overseas.

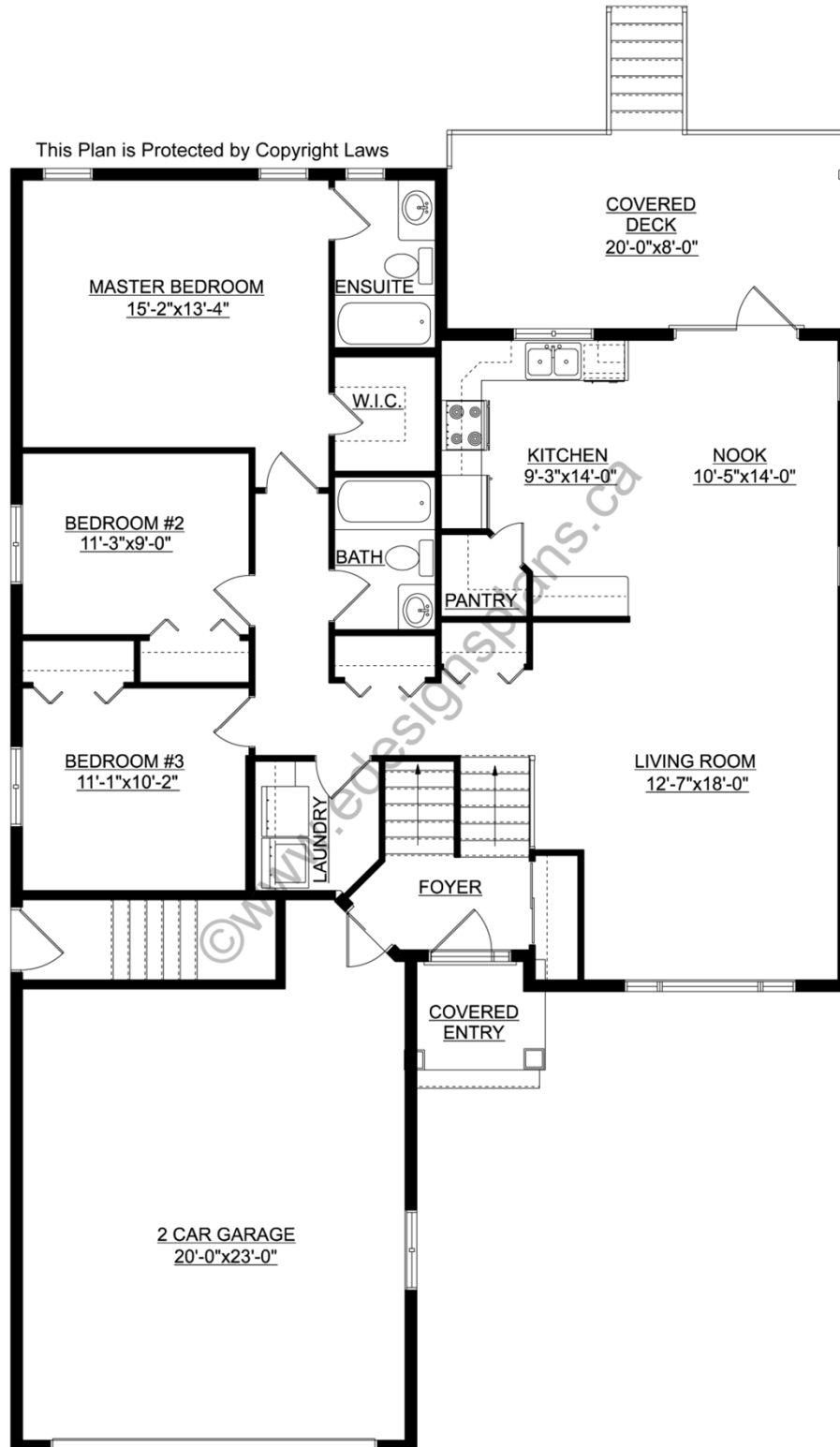
For more information about this plan contact the designer at: info@edesignsplans.ca.

Plan 2019260

www.edesignsplans.ca

[Call Us 1-855-675-1800](tel:1-855-675-1800)

Main Floor



PROTECTED BY COPYRIGHT LAWS.
PROPERTY OF **E-DESIGNS PLANS INC.**