

E-Designs Plans Inc.

A western Canadian company from Alberta that designs and ships home plans all across Canada, the US, and Overseas.

For more information about this plan contact the designer at: info@edesignsplans.ca.

Plan #: 2009450 Front Elevation

www.edesignsplans.ca

Call Us 1-855-675-1800



Rear Elevation



Bi-Level Duplex with 1-Car Garage

Plan #: 2009450

912 Sq. Ft. Main Floor

Exterior Walls:

2x6 x 8 Ft. (Main Floor)

912 Sq. Ft. Lower Floor

Foundation:

8'-4" Concrete

1824 Sq. Ft. Total Living Area Per Unit

(Other Foundations Available)

Width: 48'-0"

Special Ceilings:

None

Depth: 64'-0"

Fireplace:

No

Bedrooms: 3 per unit

Deck(s):

Rear

Bathrooms: 2 per unit

Veranda:

Yes

Main Floor Laundry: Yes

Attached Garage:

Yes (1-Car with 10'x8' Door)

Walk-in Pantry: Yes

Finished Basement Plan:

Yes

Office/Den: Yes

Bi-Level Duplex Plan with 1-Car Garage Each: 1824 Sq. Ft. of finished living area in this nicely laid out plan. With its great curb appeal, it does not even look like a duplex. Enter from the front veranda into the very open floor plan. The front foyer has a coat closet and access to the oversized single car garage. The garages feature 10'x8' overhead doors. You could easily put a large vehicle in without worrying about not being wide enough. The laundry room is conveniently located on the main floor. From the great room you have a view right to the back yard. The L-shaped kitchen includes a pantry and a phone desk. The deck located off the dinette area is large enough for the whole family to use. The large master bedroom features a walk-in closet. A full 3-piece bath is also featured on the main floor. The lower level has been designed to make use of all the available space including space for a home office/computer area beside the stairs. The storage room beside the stairs will certainly come in handy. The two bedrooms are larger than most found in duplex style plans. A full 3-piece bath and a mechanical room. The family room features two large size windows for natural lighting. All the windows in the lower level are 30" high so you do not get that feeling you're living in the ground. A great floor plan to have as a rental or split title. Lots of appeal in this well designed duplex plan.

PROTECTED BY COPYRIGHT LAWS.
PROPERTY OF **E-DESIGNS PLANS INC.**

E-Designs Plans Inc.

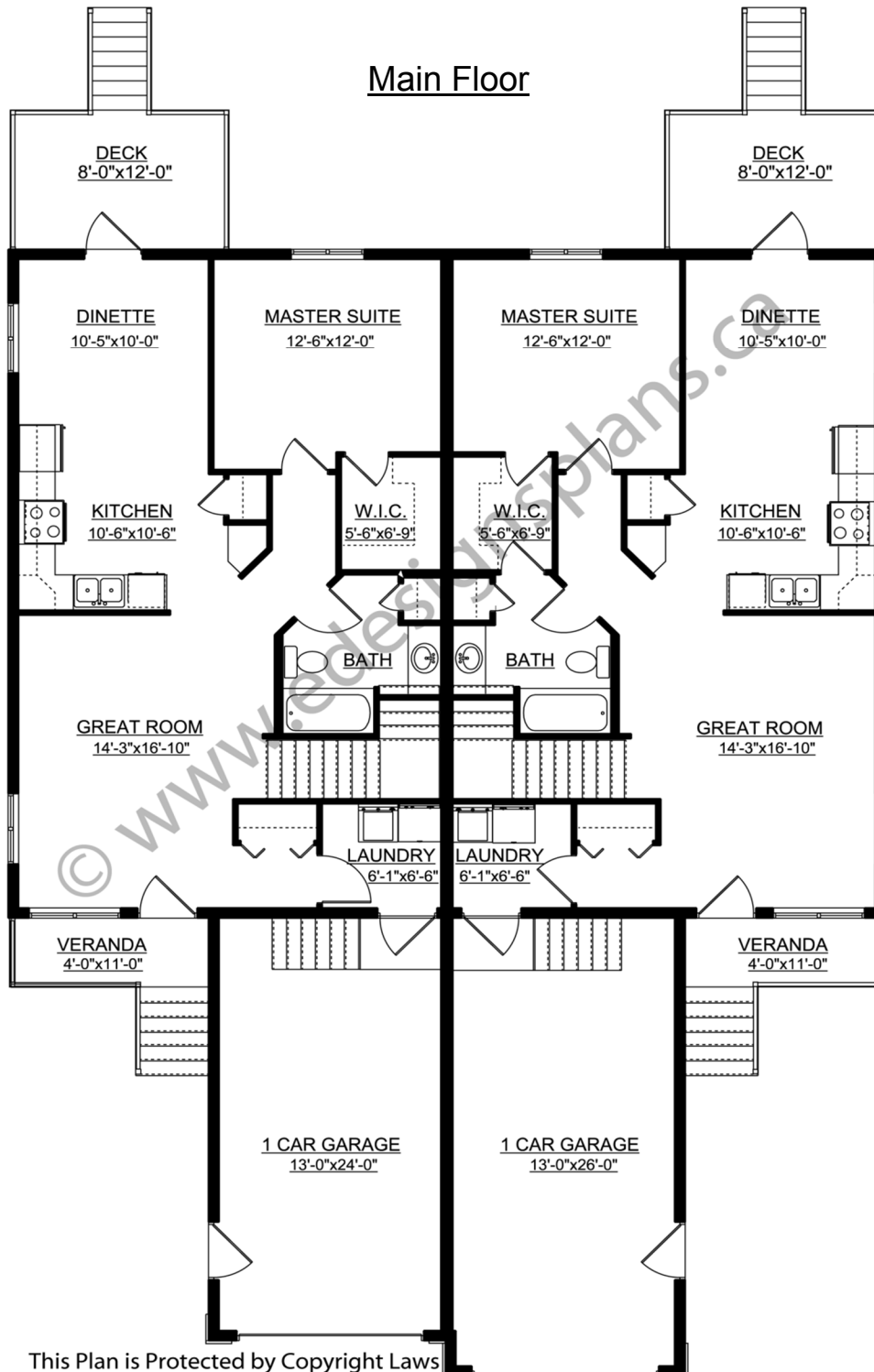
A western Canadian company from Alberta that designs and ships home plans all across Canada, the US, and Overseas.

For more information about this plan contact the designer at: info@edesignsplans.ca.

Plan 2009450

www.edesignsplans.ca

Call Us 1-855-675-1800



PROTECTED BY COPYRIGHT LAWS.
PROPERTY OF **E-DESIGNS PLANS INC.**

E-Designs Plans Inc.

A western Canadian company from Alberta that designs and ships home plans all across Canada, the US, and Overseas.

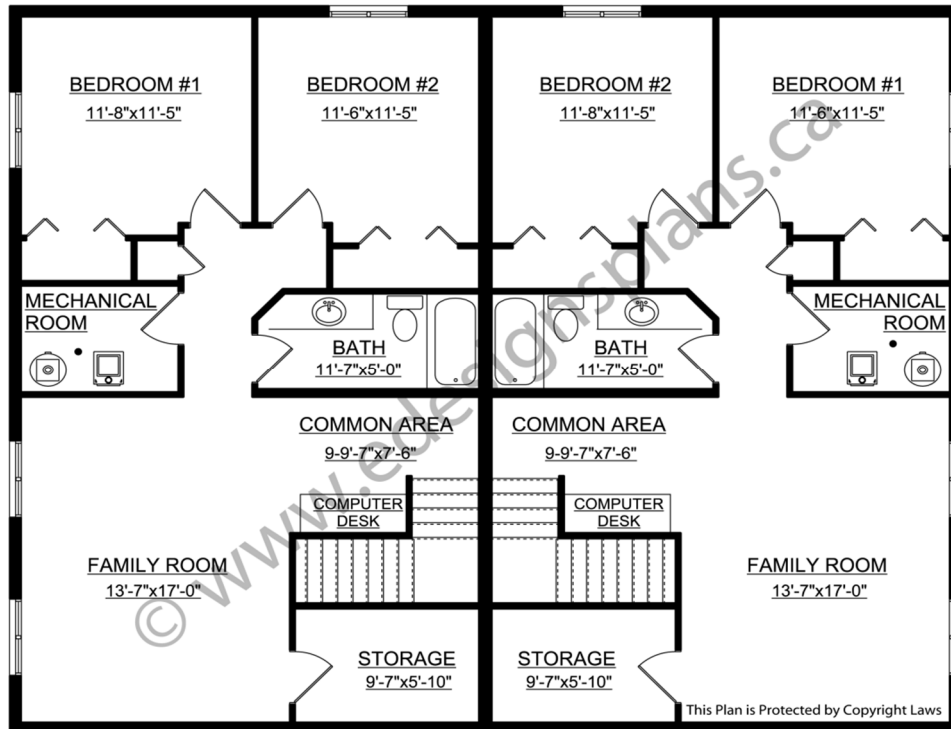
For more information about this plan contact the designer at: info@edesignsplans.ca.

Plan 2009450

www.edesignsplans.ca

[Call Us 1-855-675-1800](tel:1-855-675-1800)

Lower Floor



PROTECTED BY COPYRIGHT LAWS.
PROPERTY OF **E-DESIGNS PLANS INC.**