

E-Designs Plans Inc.

A western Canadian company from Alberta that designs and ships home plans all across Canada, the US, and Overseas.

For more information about this plan contact the designer at: info@edesignsplans.ca.

Plan #: 2024474 Front Elevation

www.edesignsplans.ca

Call Us 1-855-675-1800



Left Elevation



Rear Elevation

Modern Side-by-Side Duplex with Income Suites

760 Sq. Ft. Main Floor

689 Sq. Ft. Lower Floor

Width: 38'-6"
Depth: 45'-0"
Bedrooms: 1
Bathrooms: 1
Laundry: Lower Floor
Pantry: Lower Suites
Office/Den: No

Plan #: 2024474

Exterior Walls:

Foundation:

Special Ceilings:

Fireplace:

Deck(s):

Veranda:

Attached Garage:

Finished Basement Plan:

2x6 x 8 Ft. (Main Floor)

9 Ft. Concrete

(Other Foundations Available)

None

No

No

No

No

Yes (Suites)

Modern Side-by-Side Duplex with Income Suites.

Discover this modern side-by-side duplex plan, perfectly balancing functionality, comfort, and revenue potential. Each mirrored unit welcomes residents via a private foyer into an open-concept main level where living, dining, and kitchen areas flow effortlessly. The main floor bedrooms offer dedicated walk-in closets. From the foyer, stairs lead to fully self-contained basement suites featuring private living rooms, kitchens, bedrooms, bathrooms, and storage access. A central shared laundry and mechanical room optimizes maintenance, while clean architectural lines and contemporary finishes elevate curb appeal. Oversized windows and high ceilings dramatically maximize natural light and enhance the perception of spaciousness. Ideal for investors, multigenerational families, or homeowners seeking rental income, this design maximizes privacy, versatility, and efficient use of space within a compact footprint and exceptional year-round comfort.

PROTECTED BY COPYRIGHT LAWS.
PROPERTY OF **E-DESIGNS PLANS INC.**

E-Designs Plans Inc.

A western Canadian company from Alberta that designs and ships home plans all across Canada, the US, and Overseas.

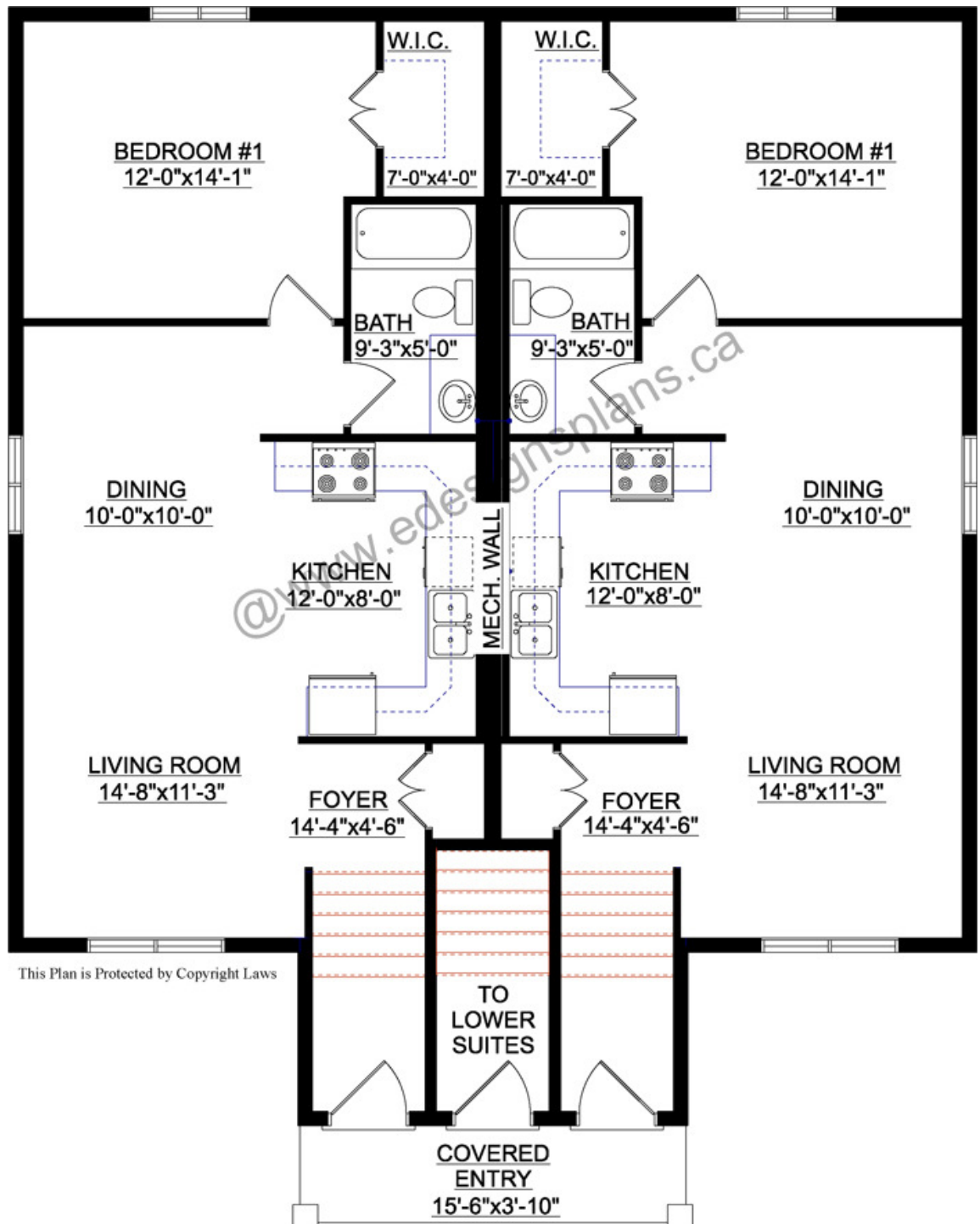
For more information about this plan contact the designer at: info@edesignsplans.ca.

Plan 2024474

www.edesignsplans.ca

[Call Us 1-855-675-1800](tel:1-855-675-1800)

Main Floor



PROTECTED BY COPYRIGHT LAWS.
PROPERTY OF **E-DESIGNS PLANS INC.**

E-Designs Plans Inc.

A western Canadian company from Alberta that designs and ships home plans all across Canada, the US, and Overseas.

For more information about this plan contact the designer at: info@edesignsplans.ca.

Plan 2024474

www.edesignsplans.ca

[Call Us 1-855-675-1800](tel:1-855-675-1800)

Basement

