

E-Designs Plans Inc.

A western Canadian company from Alberta that designs and ships home plans all across Canada, the US, and Overseas.

For more information about this plan contact the designer at: info@edesignsplans.ca.

Plan #: 2008435 Front Elevation

www.edesignsplans.ca

Call Us 1-855-675-1800



Rear Elevation



6-Plex Plan

780 Sq. Ft. Total Living Area Per Unit

Width: 90'-0"
Depth: 32'-0" (incl. deck)
Bedrooms: 2 per unit
Bathrooms: 1 per unit
Main Floor Laundry: Yes
Walk-in Pantry: No
Office/Den: No

Plan #: 2008435

Exterior Walls: 2x6 x 8 Ft. (Lower Floor)
2x6 x 8 Ft. (Upper Floor)
Foundation: Slab on 4' ICF (Insulated Concrete)
Special Ceilings: None
Fireplace: No
Deck(s): Yes (Covered)
Veranda: No
Attached Garage: No
Finished Basement Plan: No

The Perfect 6-Plex for a corner lot. Not only does this 6-plex have curb appeal, but add the cost effective design, and you have the perfect plan. Each unit even has its own laundry room. This 6-plex has been designed to get the most use of the square footage. Ground level units could be designed as "Barrier Free" units. Using high-efficiency boiler and water heaters that are wall mount can save a lot of valuable space, which has been incorporated in this design. Each unit has a covered patio area with a privacy wall. Access the upper level from both ends.

PROTECTED BY COPYRIGHT LAWS.
PROPERTY OF ***E-DESIGNS PLANS INC.***

E-Designs Plans Inc.

A western Canadian company from Alberta that designs and ships home plans all across Canada, the US, and Overseas.

For more information about this plan contact the designer at: info@edesignsplans.ca.

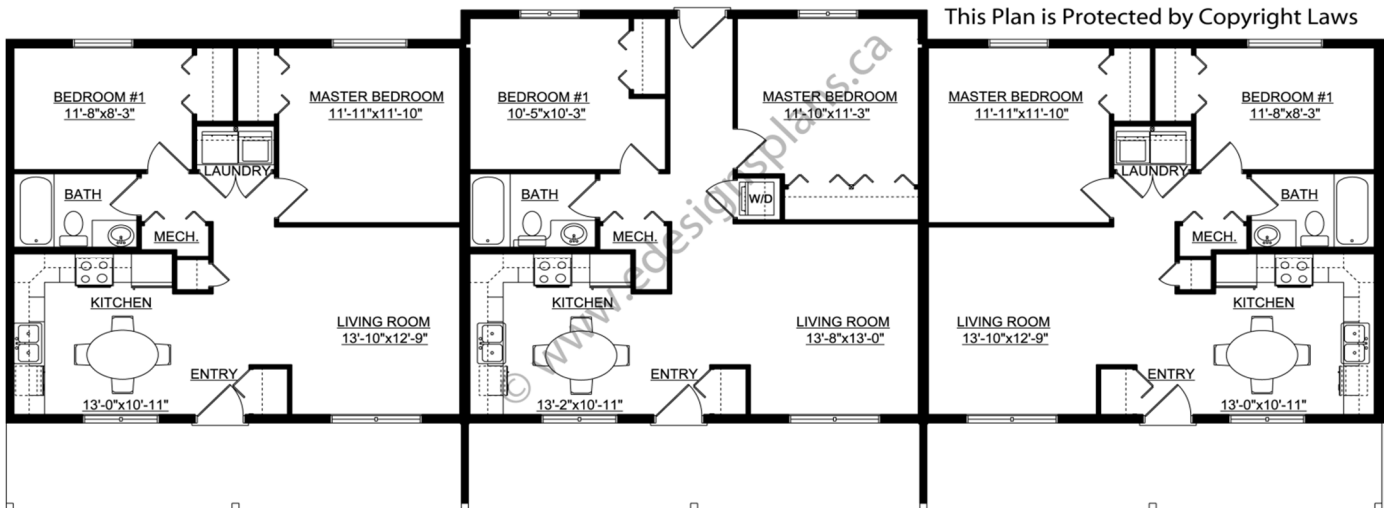
Plan 2008435

www.edesignsplans.ca

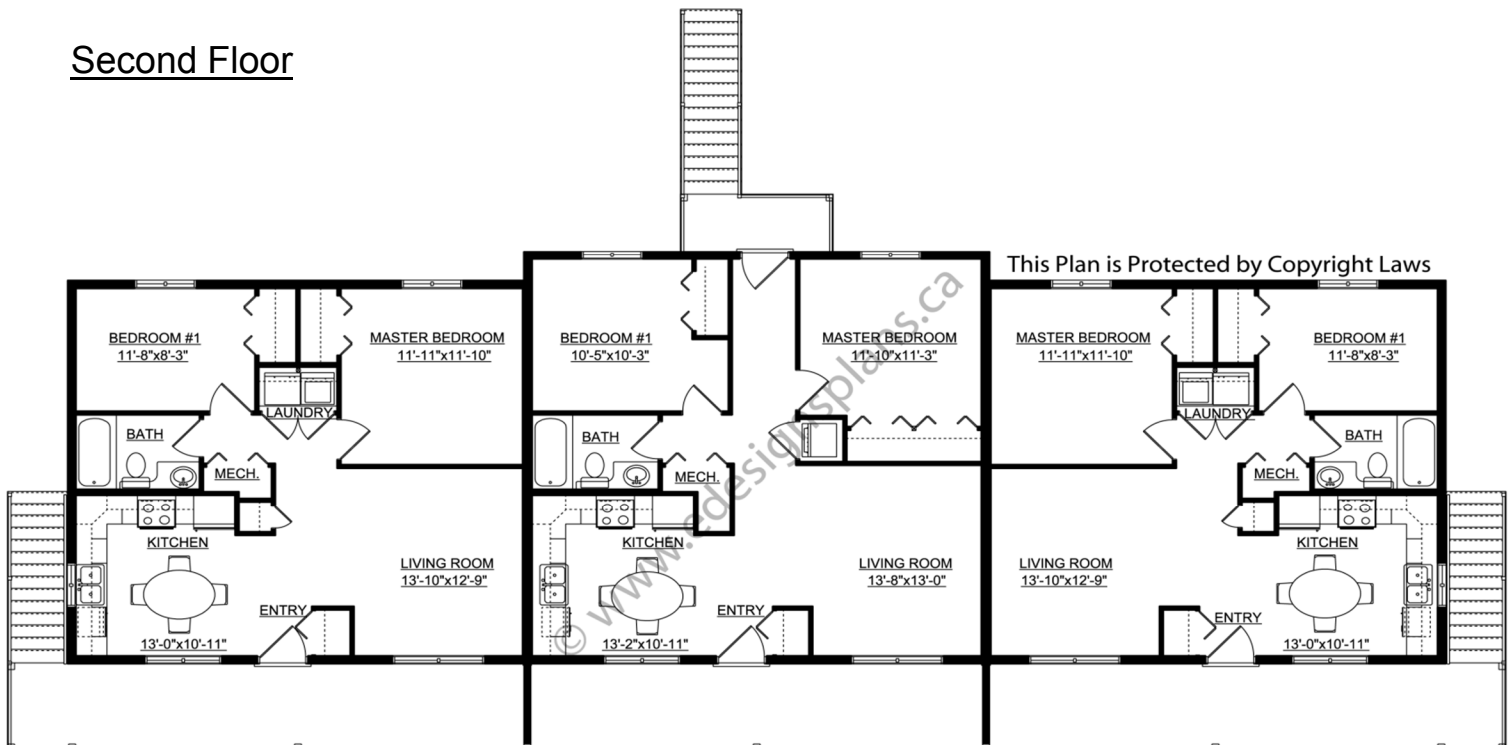
Call Us 1-855-675-1800

Note: This design may require extra Engineering to comply with building codes in your area. Always check with your local building department as what requirements may be needed.

Main Floor



Second Floor



PROTECTED BY COPYRIGHT LAWS.
PROPERTY OF **E-DESIGNS PLANS INC.**