

E-Designs Plans Inc.

A western Canadian company from Alberta that designs and ships home plans all across Canada, the US, and Overseas.

For more information about this plan contact the designer at: info@edesignsplans.ca.

Plan #: 2019256 Front Elevation

www.edesignsplans.ca

[Call Us 1-855-675-1800](tel:1-855-675-1800)



Rear Elevation



2-Storey 6-Plex Plan

480 Sq. Ft. Main Floor per Unit
480 Sq. Ft. Second Floor per Unit
960 Sq. Ft. Total Living Area per Unit
 Width: 90'-0"
 Depth: 38'-0"
 Bedrooms: 2
 Bathrooms: 1 & a Half Bath
 Main Floor Laundry: Yes
 Walk-in Pantry: No
 Office/Den: No

Plan #: 2019256

Exterior Walls: 2x6 x 8 Ft. (Main Floor)
 2x6 x 8 Ft. (Second Floor)
 Foundation: Slab on Grade
 (Other Foundations Available)
 Special Ceilings: None
 Fireplace: No
 Deck(s): No
 Veranda: No
 Attached Garage: No
 Finished Basement Plan: N/A

2-Storey 6-Plex Plan. This 6-Plex Plan is a two bedroom design on the second level, along with a 3-piece bathroom. The main floor has a covered concrete patio running along the front entrances. There is also a privacy wall between every two units. The living room faces the street. A second entrance in the rear takes you directly into the L-shaped kitchen area. There is an eating counter built in, right beside the dining room, for additional seating space. A half bath, laundry, and the utility closet are all on this level. An easy build with just under 1000 sq. ft. per unit.

E-Designs Plans Inc.

A western Canadian company from Alberta that designs and ships home plans all across Canada, the US, and Overseas.

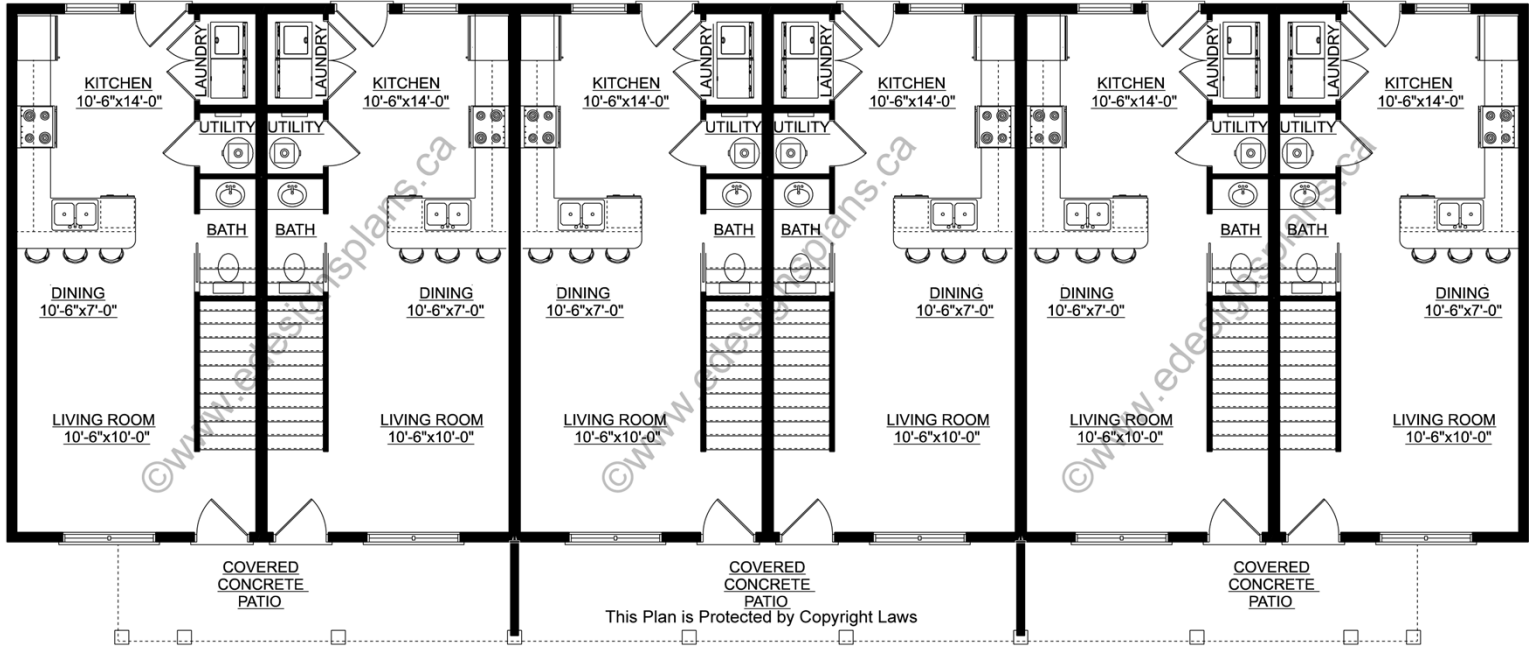
For more information about this plan contact the designer at: info@edesignsplans.ca.

Plan 2019256

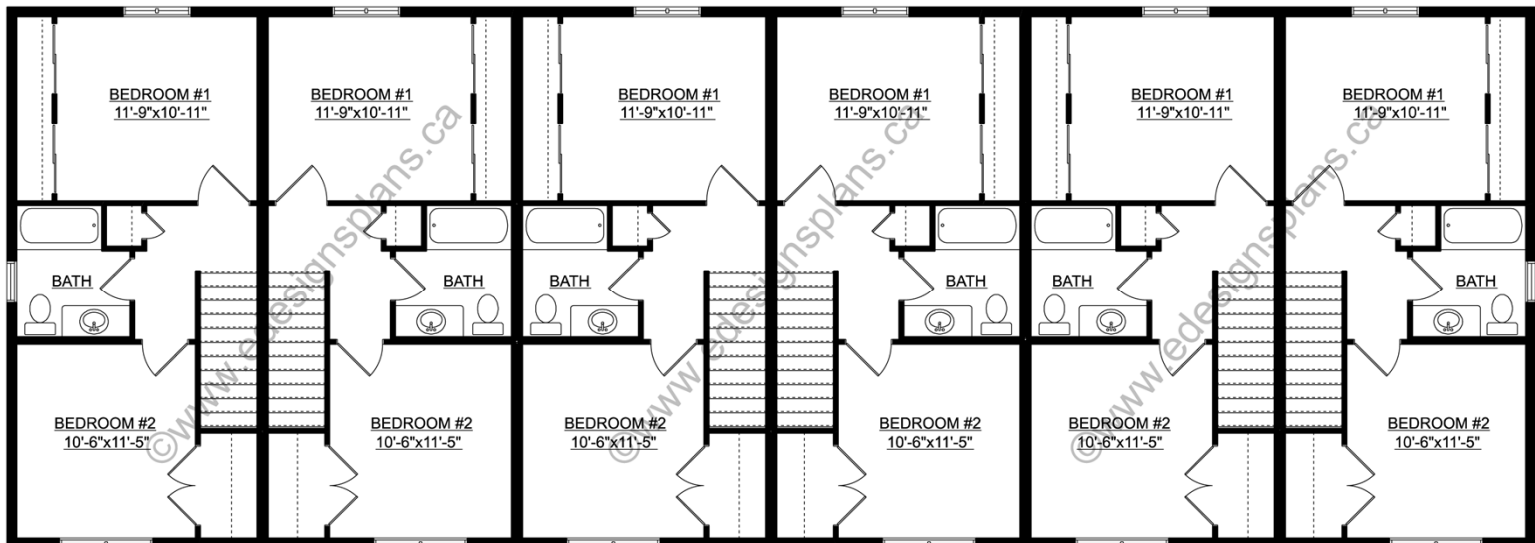
www.edesignsplans.ca

Call Us 1-855-675-1800

Main Floor



Second Floor



PROTECTED BY COPYRIGHT LAWS.
PROPERTY OF **E-DESIGNS PLANS INC.**